



COLLEGE OF CHARLESTON



THE CORPORATE CONNECTOR

“BMW Manufacturing’s relationship with colleges and universities in South Carolina, such as the College of Charleston, plays a vital role in preparing our future workforce. By partnering with academic institutions, BMW gains access to a pool of talented students and graduates who are equipped with relevant skills and knowledge. This collaboration not only fosters innovation in the automotive industry but also ensures a skilled and capable workforce for BMW’s global operations, while also contributing to the region’s economic growth and prosperity”.

**– OLIVER HAASE,
SENIOR VICE PRESIDENT,
PURCHASING AND
SUPPLIER NETWORK
AMERICAS, BMW
MANUFACTURING CO.**



ACADEMIC SCHOOLS:

SCHOOL OF THE ARTS

SCHOOL OF BUSINESS

SCHOOL OF EDUCATION

SCHOOL OF ENGINEERING, COMPUTING,
AND MATHEMATICS

SCHOOL OF HEALTH SCIENCES

SCHOOL OF HUMANITIES AND
SOCIAL SCIENCES

SCHOOL OF LANGUAGES, CULTURES,
AND WORLD AFFAIRS

SCHOOL OF NATURAL AND
ENVIRONMENTAL SCIENCES

HONORS COLLEGE

GRADUATE SCHOOL

140+ UNDERGRADUATE MAJORS
AND MINORS

85+ STUDY ABROAD PROGRAMS

1:14.5 FACULTY STUDENT
RATIO

10,200+ UNDERGRADUATE
STUDENTS

400+ GRADUATE STUDENTS

EXTRAORDINARY HAPPENS HERE

By partnering with the College of Charleston, you'll tap into prime terrain for research, community building and networking with the numerous companies that seek out the College as their go-to source for thought leadership and economic development.

Experiential learning sharpens our students' critical thinking, bolsters their problem-solving acumen and hones their entrepreneurial mindset. Offerings like internships, co-ops, investor programs and hands-on coursework involving companies and their challenges provide students with the knowledge and business bearings to make significant contributions in the workplace the moment they enter it.

The College's personalized approach to learning and its small class sizes turns out employees who think on their feet and on their own. Our undergraduates frequently play key roles with our faculty-led research, which strengthens their leadership skills. They are also prepped and ready for the workforce through career management mentoring.

At the College you make an immediate impact on the lives of outstanding students; play a prominent role in the growth and wellbeing of our community; and gain access to our vast resources

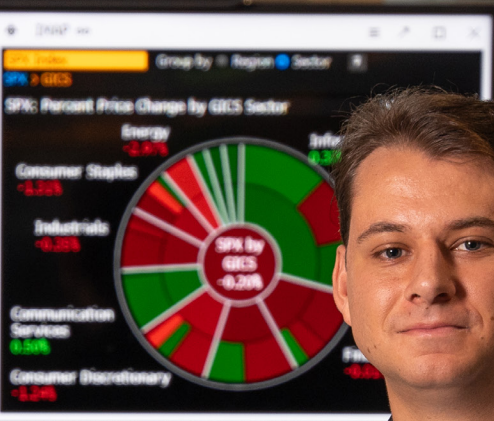
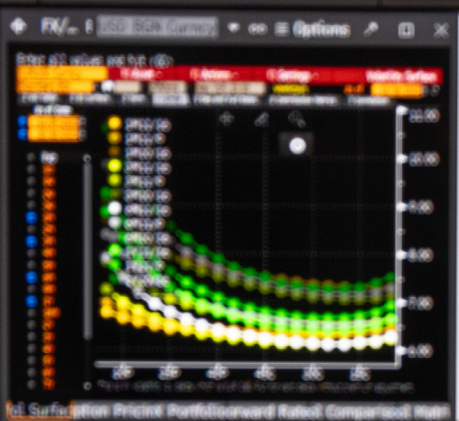


Region: United States Instrument: Fed Funds
Target: 5.25% Effect: 0.00%

Rate	Change	% Change	Value	Delta
12/13/24	+0.000	+0.0%	+0.000	5.329
01/31/25	-0.040	-4.0%	-0.040	5.329
03/20/25	-0.360	-32.0%	-0.692	5.240
05/01/25	-0.877	-59.0%	-0.219	5.183
06/12/25	-1.461	-60.0%	-0.370	4.962
07/31/25	-2.080	-59.0%	-0.520	4.813

Implied Overnight Rate & Number of moves

Rate	Number of moves
5.00	0.0
4.50	0.0
4.00	0.0
3.50	0.0
3.00	0.0
2.50	0.0
2.00	0.0
1.50	0.0
1.00	0.0
0.50	0.0
0.00	0.0



USD Deposit Rates

Rate	Rev Repo (Bid/Ask)
0/N	5.2900 5.4100 0/N 5.39 5.36
1M	5.2830 5.4270 1M 5.41 5.37
2M	5.2975 5.4775 2M 5.42 5.38
3M	5.3332 5.5151 3M 5.41 5.37

Index

Index	Value
CRB Commodity Index	-26.43
LEBOR	276.82
SOFR	-0.64

3M 5.60
6M 5.72
1Y 5.77

SOVM Sovereign Debt

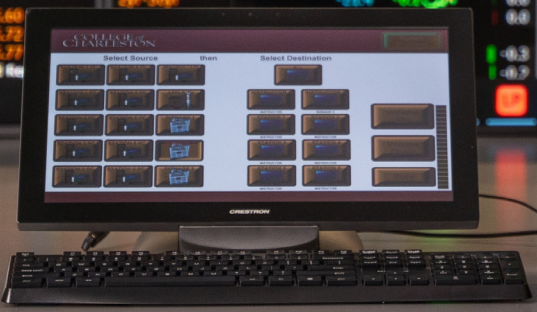
Security	Price	Yield	Chg	Yield	#Bid/Day
T 5 10/31/25 2Y	100-09	4.858	-7.6		-0.8
T 4 11/26 3Y	100-03	4.588	-8.5		-0.7
T 4 10/28 5Y	101-21	4.427	-9.0		-0.5
T 4 10/30 7Y	102-13	4.466	-8.9		-0.4
T 4 11/30/20 10Y	100-14	4.445	-8.4		-0.3
T 4 08/15/20 30Y	94-13	4.817	-7.4		-0.3
T 4 11/5/20 30Y	102-02	4.621	-7.4		-0.3

Curves

Term	Yield	Chg	Yield
2yr-10yr	-38.0	-1.4	-0.1
2yr-20yr	-1.8	+0.1	0.0
2yr-30yr	-21.4	-0.1	-0.2

ECB Economic Calendar

Date	Time	Event
11/16	08:30	Import
11/16	08:30	Import
11/16	08:30	Import
11/16	08:30	Export
11/16	08:30	Export
11/16	08:30	Initial
11/16	08:30	Conf
11/16	08:30	New
11/16	08:30	Phy
11/16	09:15	Phy
11/16	09:15	Phy



**THE FISKE GUIDE TO COLLEGES
2024 NAMED THE
COLLEGE OF CHARLESTON
THE FINEST PUBLIC LIBERAL
ARTS AND SCIENCES INSTITUTION
IN SOUTH CAROLINA.**

**2024 U.S. NEWS & WORLD REPORT
NO.4 TOP PUBLIC SCHOOLS IN
THE SOUTH**

**ONE OF THE TOP 10 PUBLIC,
ONE-YEAR MBA PROGRAMS IN
THE NATION**

**NO.6 MOST INNOVATIVE
SCHOOLS IN THE SOUTH**

**NO.4 BEST COLLEGES FOR
VETERANS IN THE SOUTH**

CREATING FUTURE BUSINESS LEADERS

The College's unique combination of exceptional faculty, modern facilities, an historic campus and cutting-edge liberal arts and sciences programs cultivates remarkable business leaders who have gone on to entrepreneurial and professional success.

As the go-to connector for the region's industry leaders, the College partners with companies to analyze data, conduct research and combine forces for the betterment of both business and South Carolina.

UNDERGRADUATE DEGREES:

Accounting • Business Administration • Commercial Real Estate Finance
Economics • Hospitality and Tourism Management • International
Business Management • Marketing Supply Chain Management

PROFESSIONAL AND EXECUTIVE EDUCATION:

Bachelor of Professional Studies with four areas of concentration

ONE-YEAR MBA PROGRAM

The EMBA offers an accelerated 18-month hybrid program

S.T.E.M.

The College's STEM program offers hands-on learning of technical skills and industry knowledge along with the inherent skills offered by a liberal arts education.

SYSTEMS ENGINEERING – includes computer and device programming, electrical circuits, digital twinning, CAD, supply chain and logistics, operations research

ELECTRICAL ENGINEERING – includes a focus on electrical control systems for ground, air and underwater vehicles

SOFTWARE ENGINEERING – includes a foreign language minor, security testing, AI

COMPUTER SCIENCE – includes computing in the arts, data science, analytics, cybersecurity

BIOLOGY – includes marine biology, health care, conservation research

CHEMISTRY AND BIOCHEMISTRY – includes material sciences, environmental analysis, forensics, pharmaceutical development

GEOLOGY AND ENVIRONMENTAL GEOSCIENCES – includes conservation, planning, environmental remediation, seismology, sustainability

MATHEMATICS – includes statistics, data science, operations research

PHYSICS AND ASTRONOMY – includes astrophysics, meteorology



“Siemens is ramping up talent recruitment at CofC, both directly and in coordination with our regional industry customers. Additionally, we have jointly promoted Siemens partnership with CofC through numerous conferences and other channels. Siemens’ comprehensive engagement with CofC is a true win-win partnership.”

– RUTH GRATZKE, PRESIDENT OF SIEMENS SMART INFRASTRUCTURE

THE LIBERAL ARTS AND SCIENCES ADVANTAGE

Problem-solving, critical thinking and a broader understanding of today's complex world are the qualities that power standout leaders. This very thinking has distinguished the academic approach of the College of Charleston since 1770. With self-knowledge and a breadth of understanding the world around them, our students achieve more. Their well-honed analytical and communication skills give them the ability to lead more effectively. Their eye toward innovation and aptitude for calculated risk allow our students to better realize goals.



THE ROI - RETURN ON INVOLVEMENT

The College of Charleston has numerous productive ventures with business and community partners that support experiential learning and foster a globally aware and engaged community. Corporate partners gain from the expertise of our distinguished faculty, research resources, professional / executive education, targeted solutions, licensing, startup connectivity, co-location and a pipeline to work-ready employees.

- PHILANTHROPY
- MENTORSHIPS
- SPEAKING ENGAGEMENTS
- SENIOR STUDENT CAPSTONES - a project designed to prepare students for professional practice
- INTERNSHIPS AND CO-OPS
- JOB SHADOWING
- MOCK INTERVIEWS
- STUDENT-LED ENTREPRENEURIAL COMPETITIONS
- INDUSTRY-FACING EVENTS - including the German-American Business Summit, Women for Women Summit, Adam Smith Week, Strategic Investment Symposium, the Mroz Global Leadership Institute Summit

TWELVE FOREIGN LANGUAGE PROGRAMS: Arabic, Chinese, Classical Greek, French, German, Italian, Hebrew, Japanese, Latin, Portuguese, Russian and Spanish

THE GO-TO PLACE FOR TALENT

Each year, more than 300 business representatives attend career fairs and employer events at the College of Charleston.

The COLLEGE OF CHARLESTON CAREER CENTER provides career advising, soft-skill training, financial wellness and network development.

- Of CofC graduates, 70% COMPLETED AT LEAST ONE INTERNSHIP or co-op
- MORE THAN 15,000 COMPANIES AND ORGANIZATIONS are linked directly to the College via Handshake, a site that connects students with open positions, mainly internships and entry-level jobs





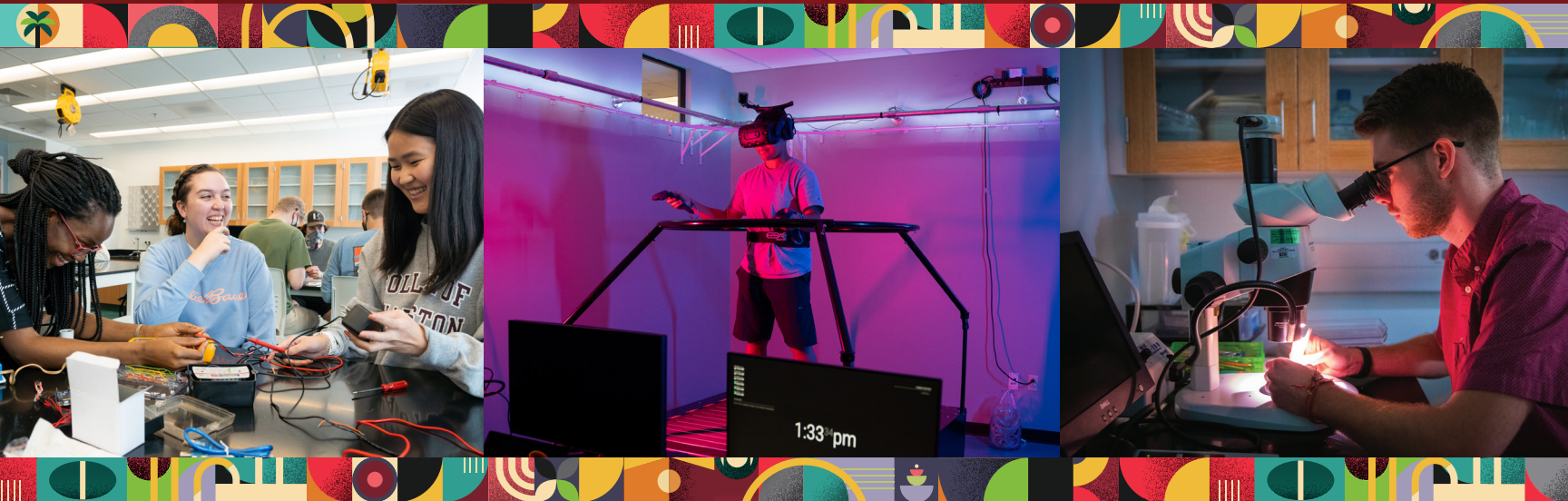
OHAJI CLARK is the first systems engineering major to participate in a co-op with Robert Bosch LLC. His training included work with the facilities engineering team to build the North Charleston facility's new cafeteria and the quality management maturity department to build the layout to integrate Babtec, a computer-aided quality software, into the company's Rivian electric motor line.

"Participating in the co-op has given me the opportunity to grow and learn the ropes," says Clark. "It is a great way to gain hands-on experience and a no-risk chance to find if it's what you like while building credentials for your future career."

Find out more about how your company or organization can collaborate with the College of Charleston. For more information, contact:

Denise Ciccarelli, CFRE Executive Director
Corporate and Foundation Relations

843.953.5018 | ciccarellimd@cofc.edu



COLLEGE OF
CHARLESTON

charleston.edu