

COLLEGE *of*
CHARLESTON

LEADING THE WAY

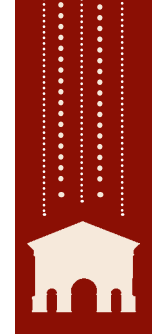


| 2011 DONOR REPORT |



CONTENTS

| | |
|----|---|
| 3 | Letter from P. George Benson President of the College of Charleston |
| 4 | By the Numbers How our donors supported the College |
| 6 | Impact Spotlights The impact of 2011 gifts across campus, across the state and across the world |
| 14 | Happenings Celebrating philanthropy and our donors throughout the year |
| 15 | 1770 Society Recognizing annual leadership giving to the College |
| 22 | GOLD (Graduates of the Last Decade) Society Recognizing young alumni annual leadership giving |
| 23 | Live Oak Society Recognizing our most loyal and consecutive donors |
| 31 | In Tribute Recognizing honored individuals and tribute donors |
| 34 | Cistern Society Recognizing our gift planning donors |
| 35 | 2011 College of Charleston Boards |
| 36 | Contact Us |



giving.cofc.edu



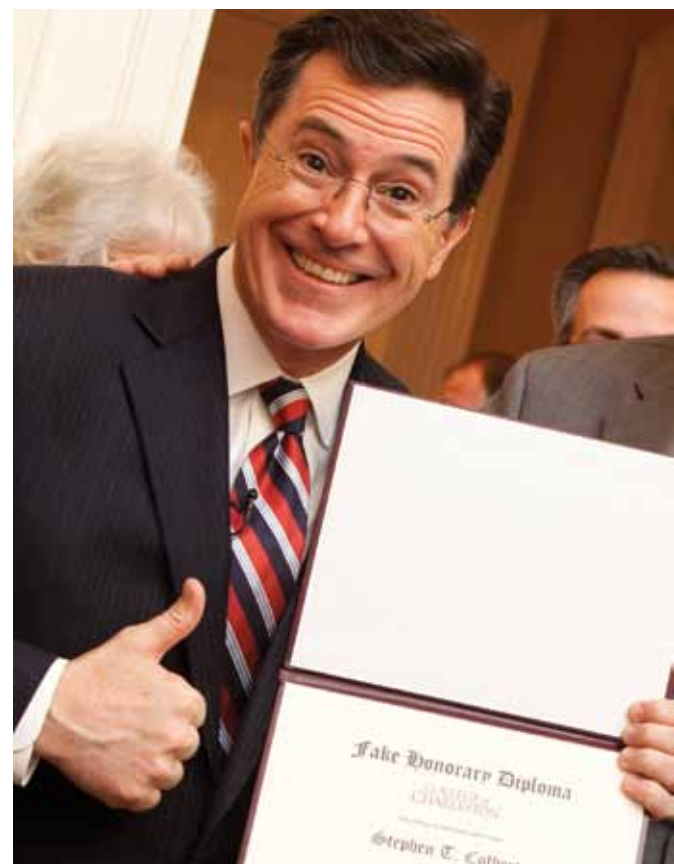
THE SOUTH CAROLINA REPUBLICAN PRIMARY BROUGHT MORE THAN 150 MEDIA OUTLETS TO CAMPUS, INCLUDING CNN'S ANDERSON COOPER, MSNBC, FOX NEWS AND TALK SHOW HOST STEPHEN COLBERT. FROM THE COLBERT SHOW ALONE, INTERNATIONAL MEDIA EXPOSURE TO THE COLLEGE WAS VALUED AT \$19 MILLION.



TO WATCH THE STUDENTS' PERSPECTIVE FROM THE CISTERN YARD, VISIT GO.COFC.EDU/COLBERT



PRESIDENT P. GEORGE BENSON AWARDS COLBERT WITH AN HONORARY DEGREE (FAKE, OF COURSE).





TO OUR COLLEGE OF CHARLESTON COMMUNITY:

It is truly an exciting time to be involved with the College of Charleston. We continue to grow our reputation as a national university while staying true to our roots as a liberal arts and sciences college.

Our student demand is stronger than it has ever been in our 242-year history. We draw students from all 50 states and 65 countries – students who compete internationally for scholarships, fellowships and other academic honors. Our faculty and staff continue to nurture the student-focused culture for which the College is known.

Our 10-year Strategic Plan will continue to guide us as we expand our academic portfolio, enhance our student-life programs and increase our presence in Charleston and the Lowcountry.

We have our donors to thank for many of these successes. Your generosity provides the margin of excellence that is essential to our progress. In fact, philanthropic support to the College has risen for four consecutive years, despite the sluggish economy. Total giving reached \$10.1 million in 2011, representing an 8.3% increase over 2010. The College also raised more than \$2.5 million through our 12 annual giving funds, an increase of nearly 18% over 2010. These results provide us with significant momentum as we prepare to launch our national comprehensive fundraising campaign.

Over the past year, we held a series of campaign briefing events around the country to engage our stakeholders and to gather their input on our campaign goals. We also conducted a rigorous campus-wide process to identify and prioritize the funding needs within each of the College's academic and administrative units. Through these efforts, we identified four key areas of critical need that will help us achieve the envisioned future described in our Strategic Plan:

- We must significantly increase merit-based and need-based scholarships that will enable us to compete nationally and internationally for top students;
- We must recruit and retain distinguished faculty, endowed chairs and visiting scholars around whose expertise we will develop new academic programs and innovative research;
- We must modernize our facilities and upgrade our technology to meet the growing needs of our students, faculty and staff;
- We must develop distinctive academic programs and expand student services to better prepare our students for professional success in our global society.

I have already seen the transformative impact that your generosity has made all across our campus. With your continued support, I strongly believe that we will accomplish our campaign goals. Thank you for investing in the bright and boundless future of the College of Charleston.

Sincerely,

P. George Benson
President



“Your generosity provides the margin of excellence that is essential to our progress.

In fact, philanthropic support to the College has risen for four consecutive years, despite the sluggish economy.”

BY THE NUMBERS

In 2011, donors made the College of Charleston a priority in a number of philanthropic ways. Once again, the College benefited from a year of generous giving from alumni, parents, friends, corporations and foundations that supported the College with annual, endowment, capital, programmatic and estate gifts. Thanks to your commitment, your vote of confidence and your generosity to the College, 2011 was a significant year of accomplishments.

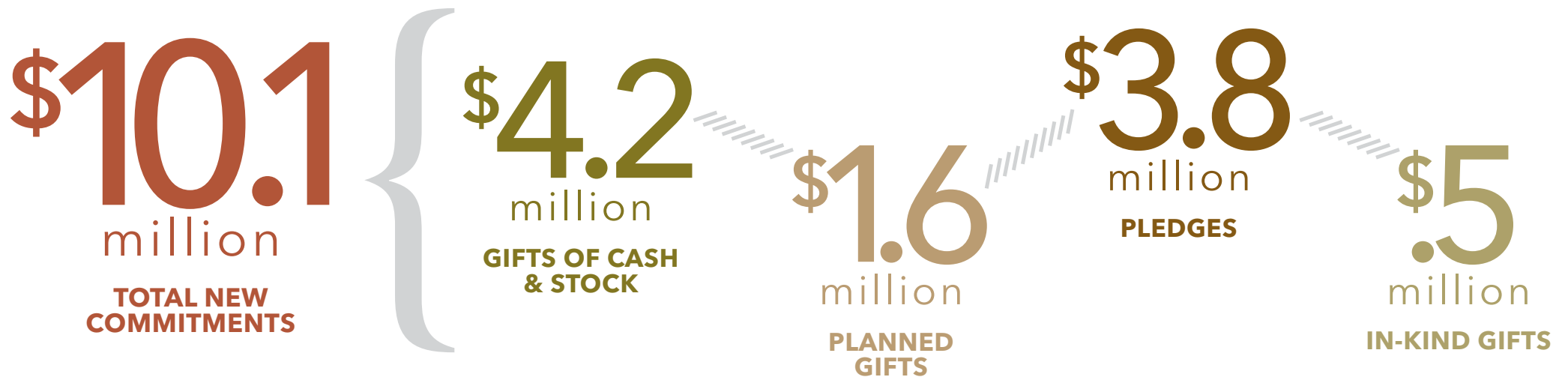
In 2011, Google invested in the new Computing in the Arts initiative and the CS4HS (Computer Science for High Schools) program. In CS4HS, College of Charleston professors and industry leaders hold workshops for middle school and high school educators about new methods and strategies for teaching computer science.



▲ Eric Wages, operations manager for Google in South Carolina :

“Google recognizes cutting-edge computer science peers at the College of Charleston worthy of collaboration. We make investments with groups doing the right things.”

2011 FUNDRAISING SUMMARY



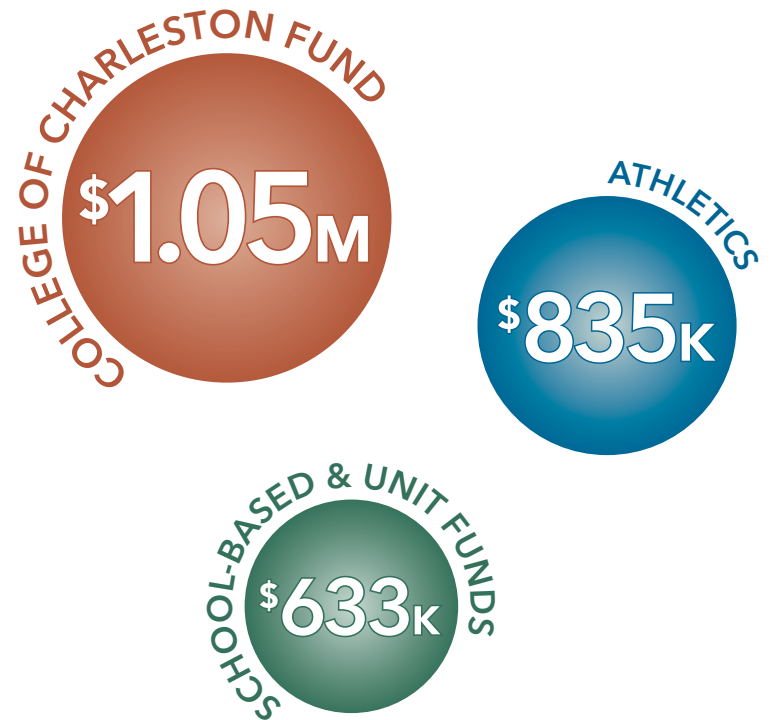
2011 DESIGNATION OF ANNUAL GIVING PROGRAMS

\$2.5 million

College of Charleston Fund

Athletics

- Advocates for Education, Health, and Human Performance
- School of the Arts - Dean's Excellence Fund
- School of Business - Dean's Excellence Fund
- Friends of the Library Fund
- The Graduate School - Dean's Excellence Fund
- Honors College - Dean's Excellence Fund
- School of Humanities and Social Sciences - Dean's Excellence Fund
- School of Languages, Cultures, and World Affairs - Dean's Excellence Fund
- School of Sciences and Mathematics - Dean's Excellence Fund
- Student Affairs Excellence Fund



IMPACT SPOTLIGHTS

Each year, private support to the College of Charleston plays a critical role in preserving the College's place as one of the nation's best public liberal arts and sciences universities for quality education, student life and affordability. Private philanthropy touches every corner of campus, from student scholarships and research funds for faculty to cutting-edge technology. **The impact of your gifts reaches across South Carolina and the world. Meet the students, faculty, programs and places impacted by your gifts.**

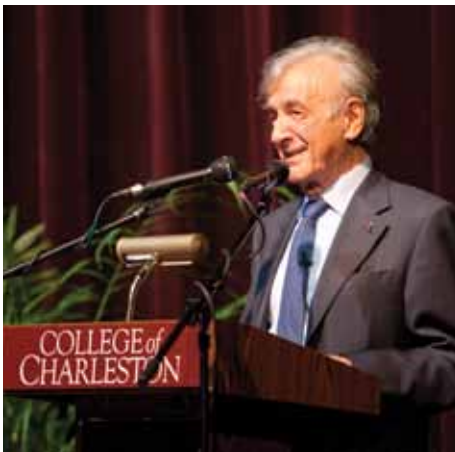
DIXIE PLANTATION RECEIVES \$1 MILLION GRANT FOR ACADEMIC FIELD RESEARCH STATIONS

The College of Charleston Foundation received a \$1 million grant from the Spaulding-Paolozzi Foundation to support two field research stations at Dixie Plantation. The stations will accommodate students and faculty from the College's undergraduate and graduate programs in environmental sciences, biology and archaeology.

“The field stations will take us to the next level and immerse students in the environments they are studying.”

- Michael Auerbach, Dean of the School of Sciences and Mathematics





NOBEL LAUREATE ELIE WIESEL VISITS CAMPUS

More than 1,500 students, faculty, staff, donors and community members attended the Elie Wiesel events in the fall. The world-renowned human rights activist and Nobel Peace Prize recipient shared a moving lecture, titled “Don’t Stand Idly By,” with a community-campus audience. Wiesel’s visit was made possible by the Zucker/Goldberg Holocaust Education Initiative and the College of Charleston Foundation.

“I hope Wiesel’s message resonates with students and the community for many years to come.”

– Anita Zucker, CEO, Intertech Group

\$500K GIFT TO SCHOOL OF BUSINESS SUPPORTS GLOBAL LEARNING AND RESEARCH

The School of Business received a generous gift to advance its strategic plan of providing global learning, teaching and research opportunities for its students and faculty. The \$500,000 gift is made possible through the Folkstone Limited Partnership, a Knox family holdings group managed by David A.R. Knox. David Knox and his wife, Susan, are CofC parents.



MORE THAN 20% OF COFC STUDENTS STUDY ABROAD EACH YEAR. OPPORTUNITIES INCLUDE CUBA, GERMANY, CHILE AND SPAIN.

“This gift will provide students with the international and interdisciplinary perspectives they’ll need to reach their fullest potential and meet the challenges of the global economy.”

– P. George Benson, President of the College of Charleston

ROBERT "TEX" SMALL JR. ANNOUNCES LEGACY GIFT

Robert "Tex" Small Jr. and his wife, Cathy, made a significant planned gift commitment to support the Addlestone Library. Small is the son of the late Robert Scott Small '36, who helped fund the construction of the library that would bear his name, as well as an endowment for special collections and materials in perpetuity. The couple also announced a gift to the Friends of the Library from the Thomas Small Foundation, which was established by Robert Scott Small.



"My father's leadership and legacy were critical to the success of the College of Charleston library. Cathy and I carry on his legacy through this commitment and the support of such a vital element of campus and the student experience at the College." - Robert "Tex" Small Jr.

"The devastation of our son Jeremy's death is unimaginable. The Jeremy Warren Vann Memorial Scholarship keeps our son's dream alive through each recipient who becomes the teacher Jeremy wished to be. Through each scholarship recipient's teaching career, Jeremy will touch the lives of thousands of children." - Chuck and Sara Davis

THE JEREMY WARREN VANN SCHOLARSHIP SUPPORTS FUTURE EDUCATORS

School of Education, Health, and Human Performance Associate Dean Sara Davis, and her husband, Chuck, established the Jeremy Warren Vann scholarship in memory of their son, Jeremy, a graduate of the College of Charleston who aspired to teach disadvantaged Native American children. Contributions have funded 20 scholarships to date, paying tuition for future teachers as they complete their clinical internships.

JOHN ZEIGLER RECEIVES ORDER OF THE SILVER CRESCENT

Less than a year shy of his 100th birthday, the State of South Carolina bestowed on John Asbury Zeigler Jr. the Order of the Silver Crescent - one of the highest honors South Carolina awards to its citizens. The School of the Arts at the College of Charleston nominated Zeigler for the award, which recognizes individuals who make a significant contribution to a particular South Carolina city or community.

"John's characteristic generosity and humility present an ideal that each of us can emulate. His desire to make South Carolina, and the world, a better place by helping young people makes him a model for everyone." - Valerie Morris, Dean of the School of the Arts



"I established a scholarship because I wanted to help support students aspiring to be positive role models for future generations of children." - Andrew Lewis, Associate Professor in the School of Education, Health, and Human Performance

FACULTY & STAFF GIFTS INCREASE IN 2011

The annual faculty and staff drive showcased the generosity of more than 419 faculty and staff members at the College, raising a total of \$220,000. The faculty and staff drive is an important part of this year's \$2.5 million annual giving efforts. Support was raised for key components of a College of Charleston education, such as scholarships, faculty research, athletics, technology, programs and study-abroad experiences.



JEWISH STUDIES PROGRAM LAUNCHES "A TIME TO BUILD" FUNDRAISING DRIVE

The \$10 million effort will ensure Jewish studies continues to thrive as a center of innovative teaching and scholarship and as a cornerstone of Jewish life in Charleston and at the College for many generations to come. Generous benefactors and believers have provided significant momentum with \$4 million in cash and pledges to date.

“To every thing there is a season, and a time for every purpose under the heavens. A time to break down and a time to build up.” – Ecclesiastes Ch. 3 v.1-3

“This gift is a testament to the incredible love Billy Silcox has for the College of Charleston – a love he learned from his parents, Willard and Mary Silcox, both Class of 1933. And now, members of the third generation of the Silcox family are reaffirming their loyalty in the name of their father.” – Karen Jones, executive secretary of the Alumni Association

SILCOX FAMILY ESTABLISHES SCHOLARSHIP TO HONOR THEIR FATHER

The Willard A. “Billy” Silcox Endowed Alumni Scholarship was created this year in honor of Billy Silcox '65 by his children, Elizabeth Silcox Phillips '96, Bill Silcox '89 and Chris Silcox '92. In a surprise announcement during the 2011 Alumni Awards Gala, the Silcox children recognized their father’s achievements as a tennis player, mentor, coach and dedicated volunteer.





SCHOLARSHIP ESTABLISHED BY STUDENT ALUMNI ASSOCIATES

The Student Alumni Associates (SAA) is a student organization sponsored by the College of Charleston Alumni Association. SAA is the first non-Greek organization to endow a scholarship at the College of Charleston. The scholarship will be awarded to a current student who has demonstrated leadership qualities while at the College.

“With each student who gets a scholarship and the opportunity to discover his or her potential, the College demonstrates what this extraordinary institution can do for our community and our world.”

– George Hynd, Provost and Executive Vice President for Academic Affairs

COLLEGE OF CHARLESTON FUND TOPS \$1M AGAIN IN 2011

For a second year in a row, the College of Charleston Fund surpassed the \$1 million mark with support for scholarships, faculty and the alumni network. The College of Charleston Fund provides students like junior Levi Vonk '12 with the opportunity to come to the College of Charleston and collaborate with faculty on international research projects in Mexico and Cuba.

“My scholarship allowed me to travel abroad, start my own nonprofit organization and discover a passion for immigration policy. I achieved goals I never thought possible.” – Levi Vonk '12, international studies major



“I give to the College of Charleston because I believe that a sound education is critical to the economic success of our state. The College provided me with an excellent education and the foundation for a successful career, and contributing financially is one of the most meaningful and impactful ways I can help ensure that our future leaders have access to the same transformative opportunities I did.” – Renée Buyck Romberger '81

DEDICATED ALUMNA RENEE ROMBERGER AND HUSBAND, RANDY, PLEDGE ESTATE GIFT

In December, Renee Buyck Romberger '81 and Randy Romberger made a bequest in their will to fund scholarships for South Carolina students and provide support for the College's Dixie Plantation. For more than 10 years, Romberger has provided extraordinary volunteer and philanthropic leadership as a member of the Alumni Association Board of Directors and as a member of the Foundation Board of Directors.



“The Cougar Cruiser is a symbol of the excellence we are striving to reach as a program, and is a source of pride for the team and the university.”

- Jamie Futrell, Women's Golf Coach

RIVERS SPEARHEADS WOMEN'S GOLF CAMPAIGN

John Rivers Jr., successful businessman, avid golf fan and loyal CofC advocate, provided the leadership and the network that enabled the women's golf team to purchase a new Mercedes Sprinter Van. Rivers championed the \$100,000 effort in less than six months by securing support from women's golf fans, both in the Lowcountry and around the United States.

“It is because of our appreciation for the strength and direction of the Jewish Studies Program, and, in particular, the tremendous respect for the leadership provided by director Martin Perlmutter, that we made this gift to the College of Charleston.” - Carol and Allan Mysel

JEWISH STUDIES FACULTY AND STAFF DEVELOPMENT GIFT FROM MYSEL FAMILY

Carol and Allan Mysel developed an appreciation for Charleston after vacationing here for several years during Spoleto Festival USA. In 1994, the Mysels moved to Charleston, and a strong affection for the College quickly developed as they took full advantage of the programming at the School of the Arts, became basketball-season ticket holders, and were drawn to activities sponsored by the Yaschik/Arnold Jewish Studies Program.



FRIENDS OF THE LIBRARY REBUILD MACKENZIE LIBRARY COLLECTION

John Mackenzie, a colonial-era planter and diplomat, championed higher education and argued for the creation of a college in Charleston. Tragically, he died young at age 36; however, he bequeathed his impressive collection of books to the College the year it was founded to serve as the institution's first library. A 1778 fire destroyed many of the original volumes; but 77 titles survived, scorched yet intact, along with the library's original catalogue. Today, through a combination of acquisition and restoration, the Friends of the Library is honoring the wishes of the College's first benefactor.

“Rebuilding the Mackenzie library gives us a chance to restore history and provide students and faculty with remarkable research opportunities.” - David Cohen, Dean of Libraries

BOEING INVESTS IN SCHOOL OF EDUCATION, HEALTH, AND HUMAN PERFORMANCE

The Boeing Company contributed \$119,931 to establish the Boeing Farm-to-School Program, which will increase the availability of and access to locally grown agricultural food products, particularly fruits and vegetables, as well as stimulate local economies. The program, led by professor Olivia Thompson in the School of Education, Health, and Human Performance, will be implemented in two Title-I elementary schools and build upon the efforts of the S.C. Department of Health and Environmental Control to promote healthy eating and ultimately improve childhood obesity outcomes.

“This funding will not only assist our students in public health, it will support economically challenged children and their families in Charleston County public schools.”

– Frances Welch, Dean of the School of Education, Health, and Human Performance

EDUCATION PROFESSOR RECEIVES GRANT FOR NATIONWIDE STUDY

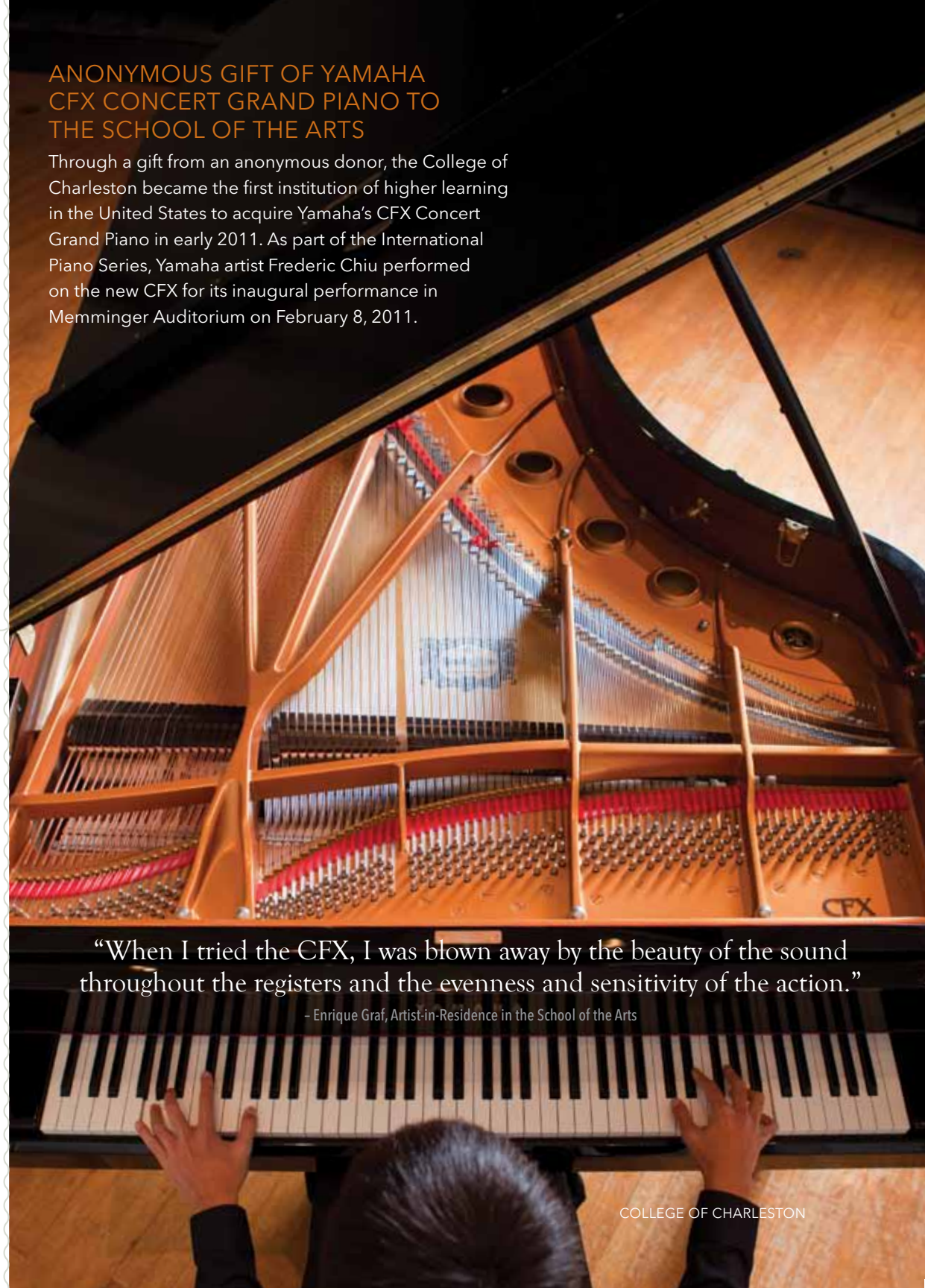
Terry Peterson, senior fellow in the College of Charleston’s School of Education, Health, and Human Performance, received funding from the Charles Stewart Mott Foundation to develop a comprehensive study of the reach and impact of the nationwide 21st Century Community Learning Centers (21st CCLC). The project will be supported with a \$125,000 grant and will provide a thorough and comprehensive examination of the 21st CCLC initiative, including best practices, data and case studies from sources nationwide and advice from a number of education and expanded learning-time experts.

“We are confident Dr. Peterson’s study will motivate policy makers and school, parent and community leaders to make decisions that will strengthen and expand learning-time partnerships and programs so our children and youth can better succeed and achieve.”

– Gwynn Hughes, Mott Foundation’s Pathways Out of Poverty program

ANONYMOUS GIFT OF YAMAHA CFX CONCERT GRAND PIANO TO THE SCHOOL OF THE ARTS

Through a gift from an anonymous donor, the College of Charleston became the first institution of higher learning in the United States to acquire Yamaha’s CFX Concert Grand Piano in early 2011. As part of the International Piano Series, Yamaha artist Frederic Chiu performed on the new CFX for its inaugural performance in Memminger Auditorium on February 8, 2011.



“When I tried the CFX, I was blown away by the beauty of the sound throughout the registers and the evenness and sensitivity of the action.”

– Enrique Graf, Artist-in-Residence in the School of the Arts



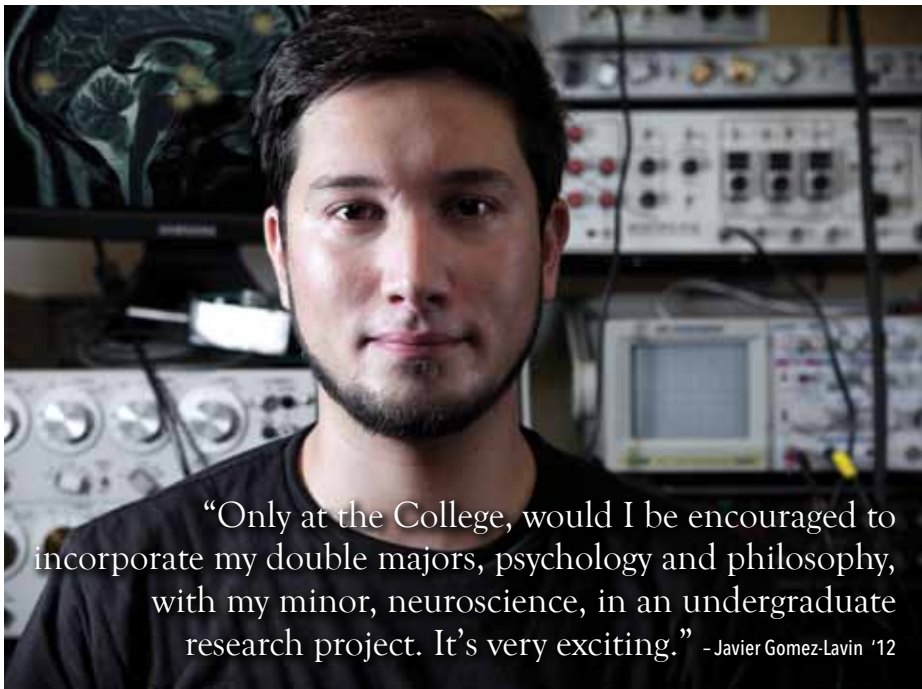
COUGAR CLUB ACHIEVES 20% INCREASE IN SUPPORT

The Cougar Club set an all-time record for private support to the athletics department, surpassing last year's annual fund record by more than 20%, as well as bringing in new capital and endowment gifts.

"2011 was a banner year for our student-athletes academically and athletically. Plus, Cougar Club donors increased their donations more than any previous year." -Tom Hallberg, Cougar Club board member and Foundation board member

UNDERGRADUATE RESEARCH SOARS ON CAMPUS

This summer, the National Science Foundation awarded Javier Gomez-Lavin '12 a Research Experience for Undergraduates grant to work on functional magnetic resonance imaging (fMRI) with Professor Carol Seger at Colorado State University in Fort Collins. Gomez-Lavin helped to design, pilot, run and analyze the fMRI experiment, which looked at which brain regions were involved with different working memory strategies.



"Only at the College, would I be encouraged to incorporate my double majors, psychology and philosophy, with my minor, neuroscience, in an undergraduate research project. It's very exciting." - Javier Gomez-Lavin '12

"The Bonner Leaders are giving back many times over in their program. That's the wonderful thing about this scholarship - it's not a handout, it's an opportunity." - Georgina Goldsmith



GOLDSMITH SCHOLARS ESTABLISHED WITHIN BONNER LEADERS PROGRAM

To honor the sense of community the College instilled in their daughter, Isobel '09, Raymond and Georgina Goldsmith established a scholarship that helps ease the financial burden of students in the Bonner Leaders Program - a four-year civic leadership and development curriculum for College of Charleston undergraduate students.



Don Belk '00, Kirk Segars '10, Matt Foster '07 and Marty Belk at the inaugural GOLD Society reception



Faculty Emeritus Jack Bass and School of the Arts Dean Valerie Morris at the Elie Wiesel reception



Higdon Student Leaders Thomas Savage '11, Sarah Andres '11 and Sam Orelove '11 presented at the Cistern Society luncheon



Rose Goldberg, Anita Zucker, Dientje Kalinsky-Adkins, Nobel Laureate Elie Wiesel, Bernard Warshaw and Susan Garfinkle at the reception preceding Elie Wiesel's "Don't Stand Idly By" lecture



School of Business Wall of Honor celebration in October



Distinguished Alumnus award recipient Neil Draisin '65 (third from left) with his family at the Alumni Awards Gala



Tap and Jean Johnson with Ashley and Mary Johnson '94 at the Fall 1770 Society donor recognition event



Dean David Cohen with guest speaker and CEO of General Electric, Jeffrey Immelt, and John Cay, chairman of the Friends of the Library, at the Winthrop Roundtable



1770 SOCIETY

Taking its name from the year that the College of Charleston was founded, the **1770 Society** celebrates alumni, parents, faculty, staff, students, friends, corporations and foundation partners who contribute \$1,000 or more each year to the College. 1770 Society donors provide leadership in their designation of annual support across campus. Gifts at the 1770 Society level fund scholarships, leadership-based student programming, athletics, research initiatives and ground-breaking technology in the arts and sciences.



1770 SOCIETY DONOR PETER SCHOTTLAND (SECOND FROM RIGHT) WITH THE 2011 SCHOTTLAND SCHOLARS IN ROCHESTER, N.Y., IN AUGUST



SCHOOL OF EDUCATION, HEALTH, AND HUMAN PERFORMANCE DEAN FRAN WELCH, BETH PIERCE MEREDITH '97, MARIANA RAMSAY HAY '82 AND MARY SUZDINA AT THE 1770 SOCIETY RECEPTION

\$500,000+

Individual Donors

Susan Knox and David A. Knox

Corporate and Foundation Partners

Samuel Freeman Charitable Trust
The Estate of Margaret K. Sullivan
Folkstone Limited Partnership

\$100,000 - \$499,999

Individual Donors

Anonymous (2)
Gerry Sue Arnold and Norman J. Arnold
Betty Beatty and Guy E. Beatty
Judith Cato and Edgar T. Cato*
Marion R. Cato and Wayland H. Cato, Jr.
Rose Dana and Charles Dana
Janet Leeds and Robert Leeds
Frances Lindner and S. Craig Lindner
Stephanie Smith-Phillips and James H. Phillips 1973
Charles B. Powell*
David W. Sneddon
Jack P. Tate
Anita Goldberg Zucker

Corporate and Foundation Partners

Norman J. Arnold Charitable Foundation
Beatty Realty Company
The Boeing Company
Edgar T. Cato Foundation, Inc.
Gaylord and Dorothy Donnelley Foundation
Fidelity Charitable Gift Fund
Charles Stewart Mott Foundation
Charles Baker Powell Trust
Jack P. Tate Foundation II
TD Charitable Foundation

\$50,000 - \$99,999

Individual Donors

Maureen Chilton and Richard L. Chilton, Jr.
Dianne Culhane and John J. Culhane
Maureen W. Kerrigan and Stephen R. Kerrigan
James R. McGeehan* 1981
Justin R. McLain 1998
Sharon Reilly and Eamonn Dennis Reilly 1988
Annie Sandler and Arthur B. Sandler

Susan F. Schottland and Peter B. Schottland
Emily Molony Swanson 1989 and
Steve Dean Swanson 1989

Corporate and Foundation Partners

BB&T
Bessemer Trust Company
The Chilton Foundation
The Community Foundation of Greater Atlanta
The Estate of Emily S. DeCosta
Google, Inc.
Kite Foundation, Nancey B. Starnes
The Estate of James R. McGeehan
Michelin North America, Inc.
Orthopaedic Specialists of Charleston PA
Post and Courier Foundation
Art and Annie Sandler Foundation, Inc.
The Swanson Family Foundation
TD Bank
Lettie Pate Whitehead Foundation
The Henry and Sylvia Yaschik Foundation, Inc.

\$25,000 - \$49,999

Individual Donors

Anonymous (3)
Patricia M. Carek and Peter J. Carek
Tricia Carter and Benjamin M. Carter, Sr.
Jane M. Carter
Birgitta Gaud and William Steen Gaud 1965
Jennifer Gianoukos and Andrew A. Gianoukos 1994
Anthony James Gianoukos 1981
Laura Gianoukos and James A. Gianoukos
Georgina Goldsmith and Raymond Goldsmith
Robert Holt 1981
Michael S. Kogan
Karen A. Lawson-Johnston and Peter O. Lawson-Johnston II
Maria O. O'Boyle and James E. O'Boyle
Milward Deas Pinckney 1951 and Lucian Pinckney
Hellene S. Runtagh
Regina K. Shapiro and Samuel R. Shapiro
Catherine Small and Robert S. Small, Jr.

Corporate and Foundation Partners

BiblioLabs, LLC
BMW Corporation
The Brand Foundation of New York

Coastal Community Foundation of SC
Community Foundation of Greater Memphis
Community Foundation of New Jersey
The Oliver S. and Jennie R. Donaldson Charitable Trust
The Farmer Family Foundation
The Thomas F. and Patricia H. Farrow Charitable Trust
Foundation For The Carolinas
Gianoukos Brothers, LLC
Peter R. & Cynthia K. Kellogg Foundation
Kerzner International Bahamas, Ltd.
The Knox Foundation
Charles G. Koch Charitable Foundation
Marin Community Foundation
Thomas Small Foundation
Tides Foundation
The Estate of Lavern M. Zook

\$10,000 - \$24,999

Individual Donors

Marlene Alfred Addlestone 1964 and Lawrence Bursten
Anonymous (5)
Vickie Baker and Tommy B. Baker
Mary W. Balch and Jerry D. Balch
Martha D. Baldwin and Gerard E. Baldwin 1967
Nella Gray Barkley
Michelle C. Baxley and Johnnie W. Baxley III 1992
Susan L. Beatty 1986
Christina Brown and Kenneth M. Brown
Judith P. Buono and Mark J. Buono 1981
Barbara Ceuleers-Salazar
Brynne F. Coletti and Robert E. Coletti
Elizabeth Culbertson and John Culbertson
Tammy Darby and Charles P. Darby III
Sara Givler DeWolf 2002 and Benjamin Karel DeWolf 2002
Calvine Dunnan and Douglas M. Dunnan
Alexander Farrow
Douglas Farrow
John Farrow
Robert Feldman
Esther B. Ferguson and James L. Ferguson
Janice L. Fetter and Stuart J. Fetter
Helen Bradham Furnans 1963
Lynn Gagliardi and Michael E. Gagliardi
Mary Heidi Hall-Jones



ANITA ZUCKER, BUSINESSWOMAN, PHILANTHROPIST AND SCHOOL OF BUSINESS BOARD OF GOVERNORS MEMBER, CHALLENGED HER FELLOW BOARD MEMBERS TO AMPLIFY THEIR PHILANTHROPIC IMPACT ON THE SCHOOL DURING 2011. ZUCKER MADE A \$25,000 GIFT IN APRIL AND OFFERED TO GIVE THIS AMOUNT AGAIN IN DECEMBER IF HER BOARD COLLEAGUES JOINED HER AS DONORS TO THE BUSINESS SCHOOL AND BOARD GIVING INCREASED BY \$50,000 OVER THE PREVIOUS YEAR'S TOTAL. BOARD MEMBERS EARNED ZUCKER'S CHALLENGE GIFT; AND THANKS TO HER LEADERSHIP, GIVING TO THE SCHOOL BY THE BOARD IN 2011 SOARED TO OVER \$555,000.

Sarah Permenter Hays 2003 and Joshua J. Hays 2003
Marilynn W. Hill and John A. Hill
Elizabeth Holder and Thomas M. Holder
Hank Holliday III
Deborah H. Imperatore and Harold J. Imperatore
Jocelyn Edwards Jenkins 2003 and Shawn A. Jenkins
Jean W. Johnson and Tapley O. Johnson, Jr.
Amy F. Joseph and George Joseph
Pamela Kaplan and Stanley Martin Kaplan
Sheryl Kimerling and Jonathan Kimerling
Sharon Brock Kingman 1980 and Russell Kingman
Julie W. Klaper and Martin J. Klaper
Kristina Lucas and Russell Lucas
Cynthia Malony Masters and Ernest L. Masters, Jr. 1972
Michele York Mattox and John Christopher Mattox 2002
Harriet P. McDougal
Shari R. Meany and Kevin C. Meany

Kristy Milkov and Milko Todorov Milkov 1997
Lissy L. Morgan and David L. Morgan
Shelley A. Wanger and David H. Mortimer
Lily Harriman Mortimer 2012
Connie Olivetti and Alfred C. Olivetti
Mary S. Phipps and Howard Phipps, Jr.
John Minott Rivers, Jr.
Melissa Garrison Sauls 1986 and Richard Keith Sauls 1990
Nella Barkley Schools 1986 and David R. Schools 1984
Howard I. Schwartz
Susan Shabica and Charles Shabica
Kaye Smith and T. Scott Smith
Nancy Webb Stafford 1970 and Sam Stafford III 1968
Gary Walsh Thomas 1983
Mary Ellen L. Way and Charles S. Way, Jr.
Belinda Broido and Jeffrey Michael Weingarten
Bonnie Wiley
Gail G. Williams

Tom G. Youngblood and M. William Youngblood
John A. Zeigler, Jr.

Corporate and Foundation Partners

Acorn Hill Foundation, Inc.
Anonymous
Asian Cultural Council
Association for Jewish Studies, Inc.
Baker Motor Company
Bank of America Foundation
BenefitFocus.com, Inc.
Charleston Trident Association of Realtors
Charleston Trident Multiple Listing Service, Inc.
Charleston Wine + Food Festival
City Market Hotel Associates, LLC
College of Charleston Alumni Association
The Community Foundation of Greater Birmingham
The Charles A. Dana Foundation
Dixon Hughes, PLLC
Elms Digestive Disease Specialist
Estes Express Lines
The Gavalas-Kolanko Foundation
The Golden Pearl Foundation
Mary and Kathleen Harriman Foundation
Herzman-Fishman Foundation (Leo and Carol H. Fishman)
Hibernian Society Foundation
Litton Syndications
Lock and Key Productions, Inc
MWV
Moe's Southwest Grill
Olivetti Foundation, Inc.
Raven Cliff Company
The Peter Jay Sharp Foundation
Skirt! Magazine
Wilbur S. Smith & Stephanie E. Smith-Phillips Foundation
Stolzle USA
SunTrust, Atlanta
The Weingarten Family Foundation
Wells Fargo
Wells Fargo Social Responsibility Group
The Jerry and Anita Zucker Family Foundation, Inc.

\$5,000 - \$9,999

Individual Donors

Renee D. Anderson and Ivan V. Anderson, Jr.
Anonymous (5)

Sharon Asbill and William S. Asbill
Linda E. Bakker and Anthony E. Bakker
Edna Boone and William Boone
Jane C. Bowen
Janice L. Brooks and Leonard Brooks III
Sharon Buehler and William F. Buehler
Beth Buford and R.C. Buford
Billings Cay and John E. Cay III
Marnie Chardon and Marc Chardon
Kay Ciganovic and Dennis D. Ciganovic
Janice Clark and Malcolm C. Clark
Patricia Copeland and Earle V. Copeland 1993
Leilani DeMuth
Carolyn Draisin and Neil W. Draisin 1965
Meb Eady and John L. Eady 1963
Stanley B. Farbstein
Alice W. Farmer and Curtis C. Farmer
Prudence Finn and William A. Finn
Caroline S. Finnerty and Peter F. Finnerty, Jr.
Jessica Eckle Fisher 1996 and Winston C. Fisher
Jeffrey A. Foster
R. Pringle Pipkin Franklin and Samuel C. Franklin, Jr.
Pam Frick
Sherri R. Geddes 1991 and Timothy J. Geddes
Harriet Lauper Goldberg 1985 and Charles S. Goldberg
Nancy Gorski and Paul T. Gorski
Leah D. Greenberg and Raymond S. Greenberg
Charlene McCutchen Grice 1982 and George D. Grice III
Deborah Wise Guerry 1980 and John Everett Guerry III 1977
Patricia Sullivan Gustafson 1972 and Kenneth S. Gustafson, Sr. 1975
Nancy C. Hall and Charles D. Hall
Mariana Ramsay Hay 1982 and David M. Hay 1981
Nancy H. Ireland
Terry L. Johnson and Carl R. Johnson 1971
Sandra Harley Jones 1963 and Kenneth L. Jones 1963
Etta Kelly and Christopher G. Kelly, Jr.
Linda G. Ketner
Amy McDonald Kinard 1977 and Jeffery E. Kinard 1977
Patricia Legasey and Edward E. Legasey
Mary Eileen Leonard 1945
Elizabeth R. Lewine
Josephine M. Lewis and Andrew H. Lewis, Sr.
Nina P. Liu

Nancy S. Longfield and William L. Longfield
T. Cartter Lupton II
Hillary B. Maclean and Richard T. Maclean 1988
Bradford Marshall and Charles K. Marshall 1976
Joseph L. Mathias IV
Jack F. Maybank
Brenda McGinnis and Kevin P. McGinnis
Jennifer Mendelsohn and David B. Mendelsohn 1994
Tony Meyer 1949
Juliet S. Milligan and George H. Milligan
Sean Moore
Karen L. New and Marc D. New 1984
Judy W. Olitsky and Harvey J. Olitsky
Bobby F. Ott
Tina Psillos Padgett 1978 and Gregory D. Padgett 1979
Deborah K. Parsons and James M. Parsons
Stephen Knight Pond
Margaret M. Powell and John E. Powell
Kathleen H. Rivers
Jeanette Rockefeller and Parker B. Rockefeller
Mindelle K. Seltzer and Norton M. Seltzer
Cathy Hawkins Seymore 1978 and Russell J. Seymore
Gloria Seithel Silcox 1966 and Willard A. Silcox, Jr. 1965
Lawrence J. Simon 1976
Cheryl Steadman and Paul W. Steadman 1983
Yvonne M. Stoneburner and Frank D. Stoneburner
Teresa Lore Thornton 1983 and Christopher H. Thornton 1984
Lucienne Van Schaack and J. Gregory Van Schaack
Nancy G. Walker and Randolph Walker
Patience D. Walker
Marlene S. Watts 1963 and J. Fred Watts
Deborah K. Williams and John Z. Williams

Corporate and Foundation Partners

4 Spine, Inc.
Nathan and Marlene Addlestone Foundation
The Agricultural Society of South Carolina
American Institute for Foreign Study
Anonymous
ATS Intermodal
Blackbaud
E. Rhodes and Leona B. Carpenter Foundation
Charleston Fine Art Dealers Association
Croghan's Jewel Box

The Charles Delmar Foundation
Family Circle Cup
Mary W. Harriman Foundation
Hay Tire Company, Inc.
Hebrew Orphan Society
Lincoln Harris, LLC
Lyndhurst Foundation
Maybank Industries, LLC
MI-TECH, Inc.
Palmetto Exterminators, Inc.
Pearlstone Distributors
Piggly Wiggly Carolina Co., Inc.
The John M. Rivers, Jr. Foundation, Inc.
The Rosenblatt Foundation
Santee Cooper
Sauls Family Foundation
Schwab Charitable Fund
South Carolina Federal Credit Union
SunTrust Foundation
Ueberroth Family Foundation
Uricchio, Howe, Krell, Jacobson, Toporek, Theo and Keith, PA
Wild Dunes Resort

\$1,000 - \$4,999

Individual Donors

Ilonka S. Adbo 1988 and Dave Abdo
Karen K. Abrams and Andrew L. Abrams
Jeffrey Akhtar
Robin M. Alexander and Brian E. Alexander 1990
Jill Almeida and Richard Almeida
Susan D. Altman and Charles S. Altman
Susan Altman and Samuel H. Altman
John O. Ambler
Lucy Anda
Jane Anderson and Allan J. Anderson
Emmy Lou Anderson
Carolyn Nesbitt Anderson 1970 and James P. Anderson 1955
Charlie Segars and Mark O. Andrews 1976
Anonymous (5)
Nancy Apatov and Alan Beychok
Ellen F. Arnovitz
William James Ashe 1981
Mickie Asleson and Gary L. Asleson
Timothy Assey
Christine Atkinson and Robert Atkinson, Jr.
Nitsa Auerbach and Michael J. Auerbach
Rick G. Avare
Dianne P. Avlon and John Avlon
Linda Aydlette and Derwood L. Aydlette, Jr.

Caroline Myers Bailey 1977 and Donald A. Bailey
David T. Bailey
Brett M. Baker
Elizabeth Bramlett Baker 1981 and Charles J. Baker III 1980
Lisa Baker
Christa K. Banholzer and Scot D. Banholzer
Anne F. Barnes
Valerie Manatis Barnett 1984 and William Barnett III
Sharon Barnett and Charles J. Barnett
Henry D. Bannette
JoEllen Basile and Jan Basile
Doris Faye Baumgarten
Stephen J. Baumrind
Kreis B. Beall and Samuel E. Beall
Susie Beatty and John M. Beatty, Sr.
Ed Behrens
Georgia C. Bell
Jane Benson and George Benson
Barbara K. Bernstein and Donald H. Bernstein
Harriet Easley Bessent 1983
Thomas V. Bessent, Jr. 1978
Anne-Coalter Betts
K. Tracey King Bible 1994 and Kenneth W. Bible
Richard F. Blackburn
Marianne C. Bladek and Thomas R. Bladek
Blanche Blankenship and Tereance L. Blankenship 1982
Bess Brockington Bluestein 2002 and Brett A. Bluestein 1997
EttaLeah Bluestein and Nathan J. Bluestein
Dorothy S. Bodie and Hoyt Bodie
Maureen Boggs and Lloyd K. Boggs
Sylvia M. Boineau and Maxcy C. Boineau 1958
Leslie Bolick Bolden 1989 and Dana Bolden
Douglas A. Booth
Willard Boss, Jr.
Tina A. Bostic and Robert S. Bostic
Rebecca Botvin and Peter Botvin
Michelle Bouvette and Pierre E. Bouvette 1981
Jeannette Moore Bowers
Peggy Gunter Boykin 1981 and Darrell J. Boykin
Sondra H. Branch and Lenord M. Branch 1968
Arthur Brannen
Lee Breeden and James O. Breeden
Alice H. Brewer
Susan A. Bridges 1979 and Kenneth Moore
Nancy C. Bristol and Ronald H. Bristol
Jane Brooks and John J. Brooks
Joan Brown and Don H. Brown, Jr. 2004

- Elizabeth Seabrook Brown and Charles Lee Brown
 Grier Gadsden Brown 1976 and William Glen Brown, Jr. 1976
 Lisa Bollinger Burbage 1981 and John M. Burbage
 Priscilla D. Burbage and Walker Burbage
 R. Alvin Burbage 1976
 Art Burke
 Elizabeth Middleton Burke 1994 and Richard Burke
 John Hartnett Busch 1985
 Eda H. Cabaniss and Robert W. Cabaniss, Jr. Peter S. Cahall
 Connie L. Campbell and Gregg S. Campbell
 Vicki Campbell and Paul G. Campbell, Jr.
 Stephanie L. Carnohan and Peter S. Carnohan 1996
 Elizabeth Carpenter
 Keith Carpenter
 Christel R. Carpenter and Rick L. Carpenter 1971
 Diane B. Carr and Robert S. Carr
 Kathy Cassidy and Frank Cassidy
 Scott Cayouette
 Judith K. Champion and R. Wesley Champion 1988
 Ana M. Candela 1996 and Jason B. Chan 1997
 R. David Chard
 Heather J. Chipley and Robert T. Chipley
 Jane Chrisman and Mason R. Chrisman
 Denise Ciccarella and John L. Ciccarella, Jr.
 Deborah L. Reamer and Andrew S. Clare
 Michelle M. Clark and David H. Clark
 Katharine Wilkerson Claussen 1979 and Arthur Chris Claussen III 1978
 Robert G. Clawson III
 Claudia Cohen and David J. Cohen
 Mary Ann K. Colbert and Timothy J. Colbert
 Owen Compher
 Melynda G. Compton and Mark A. Compton 1998
 Elena Coniaris and Harry J. Coniaris
 Virginia C. Conlon and Kevin J. Conlon 1991
 Ann B. Connellee and William L. Connellee
 Brian E. Connolly 2001
 Garth Otto Cook
 Randee Cooper and Douglas L. Cooper
 Hartley Watson Cooper 1994 and John Ashley Cooper
 Gale H. Cooper and Elliott T. Cooper, Jr.
 William Joshua Cooper 2010
 Christopher Lee Cordes 1994
- Catherine L. Couch-Casasco and Fernando Casasco
 Elizabeth Leigh Counts 2000
 Charlotte Lee McConnell Cox 1996 and Eric S. Cox 1993
 Wendell Haley Cox
 Linda Swain Crabbe 1978 and Mark Crabbe
 Janet Heath Cracraft 1985 and Scott A. Cracraft 1983
 Mark Steven Crary 2001
 Carolyn Cremins and Bobby Cremins
 Mildred M. Crispyn and G. Joseph Crispyn
 David W. Crowley 2002
 Josephine A. Cruthers and David Cruthers
 David Murry Dabney 1999
 Pernille A. Dake
 L. Cherry Daniel 1975
 Kimberly Darden and Glenn M. Darden
 Colleen G. Dargan and Perrin Q. Dargan III 1984
 J. Belk Daughtridge
 Debbie Davis
 Donna J. Day
 Hart Deal and Jeff Deal
 Janet Deavor and James P. Deavor
 Justa B. Debnam and George F. Debnam, Jr. 1994
 Maryann T. Deom and Carl M. Deom
 John DeWitte
 Beverly E. Diamond
 George E. Dickinson
 Helen Michel Dodds 1963 and Kenneth Dodds
 Mary M. Dolan and Daniel D. Dolan, Jr.
 Mary F. Dolliver and Joseph F. Dolliver
 John Dolven
 Sarah L. Donnem
 Wendy M. Dopp and P. Steven Dopp
 Amy E. Douglas
 Karen Lundy Douglas 1970 and Walter Douglas
 Kelly Douglass and John D. Douglass 1999
 Thomas M. Dozier, Jr.
 Ellen C. Draisen and Barry H. Draisen
 Larry Driggers
 Whitney O. Duffy and Edward W. Duffy, Jr. 1983
 Carol Simmons and William Marvin Dulaney
 Amy L. Bondurant and David E. Dunn III
 Sheila Maher Dworkin and Paul H. Dworkin
 Lynn F. Eads and Albert E. Eads III 1982
 Susan Edgley and Dennis Edgley
 Burke Edwards
 Liz Edwards and Paul Edwards
 Ryan Jacob Eleuteri 2002
 Michael Elliott
- Dayna Elliott and Richard D. Elliott
 Neel Lane Ellison 1993
 Donna Looms Emerson 1977 and Barry A. Emerson
 Candace Emsiek and Richard Emsiek
 Kathryn Graven and Dennis J. Encarnation 1974
 Kathryn K. Evans and Beau B. Evans 2001
 Julie Evans and Cameron Evans
 Yvonne duFort Evans 1958 and L. Wilbur Evans 1951
 Susan Everts and Erich Everts
 Mallory Factor
 Lisa Harrell Farmer 1986 and Sean Farmer
 Olivia Farr and John Farr
 Catherine Farrell and Thomas Farrell
 Sharon L. Feinberg and Dennis A. Feinberg
 Iris Feinberg and Bruce Feinberg
 Jean R. Feldman and John R. Feldman
 Sandra Fennell and George W. Fennell
 Patricia H. Fernandez and Michael A. Fernandez
 Patricia Fisher and David Fisher
 Terry Becker Fisher 1984 and Dennis J. Fisher
 Timothy Otis Fisher
 Blair Flesch and Tyler Nathaniel Flesch
 Charlotte Flint and Michael J. Flint 1977
 Carolee Rosen Fox*
 Harold I. Fox 1947
 Karen Fraser and Christopher B. Fraser
 Juanita Delphine Frasier 1995 and Edward Frasier III
 Alberta Way Freeman and Robert L. Freeman 1978
 Trent Friedmann
 Margaret Collins Frierson 1985 and Gregg N. Frierson
 M. Janine Quinn and David G. Frolio
 Justin P. Gaeta 2009
 Leslie Gambee and Peter Gambee
 Charles D. Gantt
 Susan Moore and Andrew Eugene Geer III 1983
 Richard Gilbert
 Clay Jason Gillam 1999
 Henry C. Gillam
 Robin Ginsberg and Samuel Ginsberg
 Andrea Hillsman Glenn and E. Vernon Glenn
 Jonas Glenn
 Nicholas Collins Glover 2005
 Ruth P. Goldberg
 Henrietta U. Golding 1974
 Elizabeth Tiller Gourdin 1980 and Theodore G. Gourdin 1981
 Enrique G. Graf
 J. Michael Grant
- Anna Tsalapatas and George Gratzick
 Pat Gray and Timothy Gray
 Bill Green
 Judith L. Green and Mark R. Green
 Barbara L. Green and William D. Green
 Phillip H. Greenberg
 Corinn Claire Griesedieck 2012
 Page Growney and Jeffrey Growney
 Michael W. Grueneberger 2003
 Nancy Sharkey and Keith Grybowski
 Karen Guancione and John Guancione
 Barbara Hallberg and Harold Thomas Hallberg
 Emily Haly and Adam J. Haly 1994
 Elizabeth Stevens Ham 1980 and Forrest Cleave Ham
 Linda Hammill and Thomas A. Hammill III 1988
 Mary E. Hanahan
 Lizanne Hanckel and John Hanckel
 Sandra Hannegan and Chris Hannegan
 Dorothy Harrison and Jerry Harrison
 Sylvia C. Harriss and W. Lee Harriss
 Sylvia Craver Harvey 1958 and Charles Edward Harvey
 Elizabeth Haskin and William B. Haskin, Jr. 1986
 Kendra Haskins and Michael Haskins
 Henry J. Hauhn III
 Anne Hawkes and James S. Hawkes
 Wynne Elliott Outlaw Hawkey 1991 and Brian K. Hawkey 1990
 Cheryl Hay and Henry M. Hay III 1985
 Carla Heard and Charlie Heard
 Susan B. Heath and Arthur J. Heath
 Ruth Heffron
 Bert Hefke
 Cynthia M. Heldrich and Frederick J. Heldrich III
 Zak Helmerich
 Pamela Hightower and James F. Hightower 1982
 Kandy Higley and William Higley
 Laura Ellen Hines 1984 and Samuel M. Hines, Jr.
 Shirley Rogers Hinson 1994
 Kelly Kaiser Hiott 1986 and Stephen B. Hiott 1986
 Betty J. Hitt and Russell A. Hitt
 Jerry W. Holforty 1977
 Ed Holt
 Gedney M. Howe III
 Betty F. Howell and Roy A. Howell, Jr. 1946
 Virginia Taylor Howell 1989 and Roy A. Howell III 1984
 Valerie Baker Howell 2002 and Scott S. Howell 2002
- Sherri Montgomery Howie 1987 and Theodore V. Howie, Jr. 1983
 Carol Huesca and Carlos Shay Huesca
 Katy Hufnagle and Jon Hufnagle
 Jane Powers Huggins 1985 and Rex W. Huggins
 Susan Stansell Huggins 1989 and Tracy S. Huggins 1991
 Constance L. Hughes and Lowry D. Hughes
 Vivian Viles Huguley 1974 and John E. Huguley, Jr. 1972
 Carol Joy Mackey Hume 1975 and Corey D. Hume 1977
 Ann-Therese Hyman and Eli H. Hyman 1986
 Alison Hynd and George Hynd
 Jeffrey L. Irvin
 Brenda K. Isaac and Bob Isaac 1958
 Patricia Ring-Jablonski and Richard C. Jablonski
 Deborah R. Lee James
 Jasper Johns
 Cynthia Hay Johnson
 Wilbur E. Johnson
 Margaret Johnston and Bradley L. Johnston
 Andrea P. Jones 1963
 Richard K. Jones
 Mary J. Jordan and John M. Jordan, Jr. 1962
 Mary E. Kasman and Joseph D. Kasman
 Elizabeth W. Kassebaum
 Susan B. Kaufman and Louis J. Kaufman
 Rebecca P. Kay and Ansel C. Kay IV 1985
 Ann Keane and Raymond C. Keane
 Catherine K. Keany and Kevin J. Keany
 Brandy Keener and John Keener
 Matt Keller
 Daniel A. Kendall 1998
 Jolee Kenney and Charles H. Kenney
 Lenora Kessler and Raymond A. Kessler, Jr.
 David Kilborn
 Mary Kilbride and William B. Kilbride
 Gretchen King and Caleb H. King 1994
 Anne Atwater King 1978 and Kenneth T. King 1979
 Mitzi Kirshtein and Sam Kirshtein 1945
 Gary C. Klein
 Linette Klevan and Thomas Klevan
 Joyce P. Knox and William P. Knox
 Catherine A. Kocher and Mark J. Kocher
 Julie A. Kornahrens 1984
 Constance Calomiris-Korobkin and Alan Korobkin
 Amy Krell and Edward Krell
 Sue A. Sommer-Kresse and John L. Kresse
 Paula Kutcher and Leslie Kutcher
 Nancy Kutler and Edward Kutler

ALLAN NADLER FROM DREW UNIVERSITY WAS THE FALL 2011 ARNOLD DISTINGUISHED VISITING CHAIR IN JEWISH STUDIES. HE IS A LEADING SCHOLAR ON JEWISH INTELLECTUAL HISTORY.



Anne Burges Lake 1964 and Joel J. Lake
 Jeffrey John Lamberson 1993
 Summer Myers Landrith 1999 and
 Travis P. Landrith 1998
 Sigrid G. Laughlin and Michael J. Laughlin
 John W. Lawrence
 Brianna Leask
 Nancy Leet and George Leet
 Laurie Miller Lempesis 1988 and
 Basil L. Lempesis 1979
 Dianne Lever and Benjamin R. Lever III
 Jeanne B. Lieberman and Allan D. Lieberman
 Richard K. Lintern
 Janet P. Lipov and Larry A. Lipov

Timothy Liptak
 Robert Lobban
 Frances Cain Lofton 1979 and Lionel Lofton
 Rachel Lorentzen and Per Lorentzen
 Susan R. Lourie
 Kathleen Holtz Low 2000 and
 David M. Low 1998
 Lisa Rinzler-Lubel and Alan E. Lubel
 Patricia Lucas and Gary Lucas
 Teresa Major Luhrs 1983 and William J. Camp
 Elisabeth S. Lynch and Spencer J. Lynch
 Anne Lyndrup and Allen W. Lyndrup
 Lynn Jaynes Macaluso and Charles Macaluso
 Martha P. Maguire and Walter L. Maguire, Jr.

Cathryn Hill Mahon 1980 and
 Thomas Todd Mahon II 1974
 John Mahoney
 Cynthia Harwood Malanos 1970 and
 George E. Malanos 1968
 Brooke Manheimer and
 Jeffrey P. Manheimer 2001
 Valerie Marcus and Adam Marcus
 Swain Banks Marion 1986 and
 Robert F. Marion 1987
 Rose Y. Mark
 Teresa L. Boley and Joseph D. Markee
 Susan Clark Marlowe 1976 and Robert
 William Marlowe 1971

Katherine Brockington Marshall 2003
 and James M. Marshall 2002
 Sharon Martin and Jerold Martin
 Michael S. Martin
 Marianne L. Martino and Ralph Martino
 David P. Masich
 Michael W. Massey, Jr. 1987
 Laura Mateo
 Virginia Maxson and Richard G. Maxson
 Sarah Mayer and George L. Mayer
 Amy Thompson McCandless
 Valerie R. McCauley and Durham S. McCauley, Sr.
 Katherine Moorer McDermott 1979 and
 James Patrick McDermott 1978
 Hope C. McDermott and William S. McDermott
 Kellee Schreiner McGahey 2010 and
 Robert J. McGahey, III 2000
 Sarah E. McKay and H. Chapman McKay 1986
 Rebecca McKay and John McKay
 Susan McKenna and James McKenna
 W. Andrew McKenna
 Alice Adelaide Walker McClear 2013
 Alice J. McClear and Ronald K. McClear
 Deirdre McMurtry and Kevin A. McMurtry
 Lynn McNally and Thomas McNally
 Kathleen Melligon and John Melligon
 Vickie Menard and Michael L. Menard 1980
 Jane Mendelsohn and Burnet Mendelsohn
 Nancy N. Mendelson and
 Bernard P. Mendelson 1953
 Beth Pierce Meredith 1997 and
 Robert R. Meredith, Jr.
 Carrie Blair Messal
 Emily F. Mikell and G. Lee Mikell 1984
 Susan Burnett Mikell 1981 and
 Steven G. Mikell 1978
 Risa Milbauer and David Milbauer
 Julie Sizemore Miler and
 D. Sherwood Miler, III 1974
 Jonathan Millen
 James B. Miller
 Patricia M. Miller and Marshall V. Miller
 Kerry Mobley Missel 1976 and
 Frederick G. Missel, Jr. 1976
 J. David Mitchell 1980
 Pamela Moise and Robert M. Moise
 Karen A. Moll and Peter E. Moll
 Susan Hamlin Molony and
 John W. Molony 1978
 Patricia Fralinger Moore 1984
 and Kirk E. Moore 1984
 Mark S. Moore

Annaliza Oehmig Moorhead 1992
 and John Kirkman Moorhead
 Valerie B. Morris and Boris Bohun-Chudyniv
 Phyllis J. Morrison
 Susan J. Morrison
 Cathy Morse and John Tucker Morse
 Howard Mosbacher
 Alexa S. Mosteller and Charles S. Mosteller 1981
 Penelope A. Munson
 La Guardia Smith Myers 1993
 and Anthony T. Myers
 Carol A. Mysel and Allan L. Mysel
 Tiffany L. Howard 1991 and
 Andrew J. Narcisso 1996
 Ben Navarro
 Marlijo Nelson and Rhame Nelson 1988
 Tyrone Lee Nelson 2001
 Katharine Calwell Nevin
 James Newsome III
 Christopher J. Niceley
 Jeanne B. Nicholl 1980 and Timothy H. Nicholl
 Mary Norton and Joe Norton
 Melody Nuss and Jerry J. Nuss 1990
 Megan Emily O'Brien 2010
 Mindy Odle and Thomas Odle
 Thomas E. O'Donnell
 Lisa O'Neill and Dennis O'Neill
 Barbara H. Orkin and Sanford H. Orkin
 Christine Stiepel Osborne 1978 and
 C. Wayne Osborne, Jr. 1978
 Mary Osborne and Stephen C. Osborne 1973
 Janelle Othersen and
 H. Biemann Othersen, Jr. 1950
 Jason S. Overby
 Elizabeth Rasor Page 1984
 Lauri Newkirk-Paggi and
 William Mario Paggi 1977
 June Palmer and Albert Palmer
 Marguerite B. Palmer
 Dendy L. Pappas and Rallis L. Pappas 1978
 Sarah C. Parker 1987
 Samuel Scott Partridge 1990
 John L. Paul
 Jean Ellen Paulson and L. Edwin Paulson, Jr.
 Nicholas C. Pavia
 Edward Malcolm Payne III
 Allison Payne and John T. Payne 1993
 Patricia Pearson and Wayne Pearson
 Diana Permar and Mark Permar
 Eileen Pflum and Ted Pflum
 LaVon Phillips
 Joanne M. Pitino and Richard Pitino

Katherine J. Plair and James B. Plair, Jr.
 Sandra A. Poliakoff and Edward E. Poliakoff
 Katherine Tebben Pomplun 2005
 and Bryant Pomplun
 Mark Popovich
 Mary Jo Potter and William Z. Potter
 Toya Diann Pound 1991 and
 Eugene Yin-Min Chang
 Alice H. Prater and Harlan I. Prater
 Joel Alfred Prellop
 Marsha Defoe Pringle 1979 and
 Walter M. Pringle IV
 Shirley Prystowsky and Arnold Prystowsky
 Anne Stender Puckhaber 1947 and
 Bernard F. Puckhaber 1950
 Craig D. Pulliam
 Robin H. Query and Erwin L. Query, Jr. 1977
 George Bernard Rabb 1951
 Kathy Ramich and James M. Ramich
 Charles Andrew Rankin 1993
 Ric R. Ravenel and Arthur Ravenel, Jr. 1950
 Linda Compton Ravenel and
 Daniel Ravenel 1972
 Carol Perkins and David L. Rawle
 Sally L. Read 2007
 Jeanne G. Reagin and K. Britt Reagin 1998
 Marygrace Redfern and James F. Redfern
 Ronald Lee Reese
 Kathryn Gianatos Rentiers 1951
 Ann B. Rhett
 Catherine G. Rice and Garson L. Rice, Jr.
 William Rice
 Robben Richards
 Betty B. Riggs
 Charles Rittenberg 1995
 Claire Z. Robinson and Klyde Robinson
 Nadia P. Blanchat and Kent L. Rollins 1976
 Renee Buyck Romberger 1981
 and Randy Romberger
 Suzanne S. Rosenblum and Bruce A. Rosenblum
 Irene O. Rosenthal
 Leila Davenport Ross 2000 and William Ross
 Tricia Roth and Benjamin Roth
 Rudy T. Rothseiden 2003
 Rose Condon Hamm Rowland 1972
 and John Rowland
 Cassandra Runyon
 Roger Ryan
 Patti S. Salisbury and Howard G. Salisbury, Jr.
 Hamer Salmons and Richard W. Salmons, Jr.
 Zoe D. Sanders and Alexander M. Sanders, Jr.

Betty Watkins Sandifer 1984 and
 Paul A. Sandifer 1968
 Robert John Sauters 1977 and D. Oliver Bowman
 Janet Wells Scarborough 1998 and
 George C. Scarborough 1975
 Jordy Christian Schaffner 2002
 Robert Scharstein
 Jeffrey Matthew Schilz 2000
 Lori Schimpf and Dennis K. Schimpf
 Betty Jo Schleier and Dudley Schleier
 Marion Schools and Burton R. Schools
 Diane Schroder and William G. Schroder 1999
 Elaine Rudduck Schupp 1976
 and William F. Schupp
 Donna M. Scott and Jeff Scott
 Lauren S. Scott 2004
 Monica R. Scott and Dyson Scott
 Rita Littles Scott and Leon Scott
 Marianne Seabrook and Luther Seabrook
 Michele Hendren Seekings and
 Michael S. Seekings
 Beverly D. Seinsheimer and
 Walter G. Seinsheimer, Jr.
 Jeff H. Selig
 Anne W. Semmes and William A. Semmes
 Patricia M. Shannon and Thomas M. Shannon
 Carol Shao and Alan T. Shao
 Gary E. Shealy 1982
 Kathleen Sheftall and Benjamin F. Sheftall
 Boo Sheppard and Macon Sheppard
 Howard B. Sherman
 Ivan Morton Sherman 1974 and Mark Ledet
 Kathleen G. Shevitz and Mark Shevitz
 Vita V. Shoemaker and Dan Shoemaker
 Karen Siegel and Robert C. Siegel
 Evy Dickson Silcox 1991 and
 Christopher G. Silcox 1992
 Abby Simon and Marshall Simon
 Lisa Simons and Dolph Simons III
 Anthony Skatell III
 Lynn Ray Smalley 1973 and Earl Smalley, Jr.
 Cherie Westendorff Smith 2003
 and C. Ryan Smith 2002
 Catherine P. Smith and Hilton C. Smith, Jr.
 Kevin Michel Smith 1992
 Sally Luce and Lance Smith
 Gloria Smith and Norman J. Smith
 Sandra Smith and Shawn R. Smith 1996
 Julia W. Smith and W. Arthur Smith
 Carleen L. Smith and Woodie R. Smith
 Leslie Smodic and Dale Smodic
 Susan M. Smythe and Henry B. Smythe, Jr.

THE HEIRLOOM GARDEN PROJECT AT DIXIE PLANTATION, LED BY SOCIOLOGY PROFESSOR TRACY BURKETT AND SEVERAL GRADUATE STUDENTS IN THE SOCIOLOGY AND ANTHROPOLOGY PROGRAMS, IS FUNDED BY THE GOLDEN PEARL FOUNDATION. THE GOLDEN PEARL FOUNDATION IS THE FAMILY FOUNDATION OF A 2010 ALUMNA WHO FELL IN LOVE WITH DIXIE PLANTATION WHILE SHE WAS A STUDENT.



Elizabeth Wallace Snow 1993
and Mark D. Snow 1992
Tara Snyder and Lance A. Snyder
Laurie Soenen and Scott Soenen
Cynthia Solomon and Kerry Solomon
Josh Sorkin
Margaret Olivia Sowell 1980 and R. Paul Afring
Melissa P. Spalding and Bolling P. Spalding
Doris A. Spaulding and George G. Spaulding
Sandy Spears and Thomas W. Spears
Jean Rouse Spell 1958 and Pete Spell
John Spencer
Jeannie Stallard and Robert Stallard
Susan Steinberg and Bernard Steinberg
Ellen S. Steinberg and Robert M. Steinberg
Sylvia Steinberg and Samuel Steinberg 2010
Patricia H. Steiner and Maurice L. Steiner
Robert J. Stine
Florence C. Stoertz* 1955
Laura Stone and David E. Stone
Tommy Stone
Katina Strauch and Bruce Strauch
Deb Strickler and Paul Strickler
Katherine Watkins Strubeck 1980 and
Louis R. Strubeck, Jr. 1980
J. D. Sullivan, Jr.
Frederick E. Swanson 1994
Judith Tarleton and Larry Tarleton
Robert Tarr, Jr.
Fred T. Tattersall
Caroline W. Thibault and Albert A. Thibault
Aimee Rogers Thomas 1993 and
Jay A. Thomas 1993
Samuel Duane Thomas
Jonathan Mark Thompson
Maurice Horne Thompson 1958
Diana Thornley and George C. Thornley
Kelly Workman Tick 2001 and Louis C. Tick 1998
Pamela Hill Tiencken 1975 and
John H. Tiencken, Jr. 1975
Dana Robinson Tiller 1984 and
John H. Tiller 1984
B. Kelly Titus and Jeffrey R. Titus
Caitlin T. Tobin and Christopher R. Tobin
Sharon Toporek and Edwin Toporek
Mary Jane Tozzi and John Tozzi
Cathy Turner and Michael Turner
Vasiliki Valanos and John Valanos
Anita Condon van de Erve 1970
Ellen C. Vaughan, 1981 and David J. Vaughan
Rich Villacres
Sandra Vineyard and Philip P. Vineyard, Jr.

Gloria Vinson and Jack Vinson
Nicholas R. Walsh
Anthony Scott Ward 1985
Beverly Ward and John T. Ward
Felicia B. Watson and William Watson
Laura Ricciardelli-Watt and David R. Watt
Peggy Watt and George P. Watt, Jr.
Lisa B. Weil and Adolph Weil III 1979
Barbara L. Welch
Darrell M. Wells 1996
Steve Werber
Caroline Welch West 1993 and William West
Jacqueline M. Whelan and
Stephen W. Whelan, Jr. 1975
Lucille S. Whipper
Thomas R. Wieters
Marlo Wiggans and R. Glen Wiggans
Harriet P. Williams and George W. Williams
James A. Williams
Martha T. Williams and R. Michael Williams
Danny Williamson
Diane A. Wilmot and Gunnar P. Wilmot
Alfred Edgar Wilson III 1996
Victor K. Wilson
Libby Winthrop and John Winthrop
Emily Sekula Wood 2005
Vivi Wood and George Wood
Martha M. Woodruff and
Frank B. Woodruff 1970
Cheryll Novak Woods-Flowers 1981
and Harold C. Flowers
Linda Woodside and B. Perry Woodside III
Marty Young and Gregory Young
Julie Ziff and Stephen Ziff
Gretchen M. Zoeller 2006
Margaret Kreher and John Zurlo

Corporate and Foundation Partners

Absolutely Charleston Destination
Management, LLC
Acevedo Restaurants Inc., DBA McDonald's
The Bill, Jeannie and Harry
Ackerman Foundation
Advanced Distribution Solutions, Inc
Allen Charitable Lead Annuity Trust
Alliance for Full Acceptance
Small Grants Program
Alloneword Design, LLC
American Express Foundation
Ameriprise Financial, Inc
ARAMARK Services

Associated Container Sales
Associated Jewish Charities of Baltimore
Atkinson Pool Co. & Hot Springs Spas
Atlantic Coast Life Insurance
Atlantic Trucking Company, Inc.
Avery Institute for Afro-American
History and Culture
Banks Construction Company
The Barnet Foundation Trust
Bastiat Society
Batteries, Inc.
BB&T Insurance Services
Benefit Concepts
Berle Manufacturing Company
Berlin's Restaurant Supply, Inc.
Donald H. & Barbara K. Bernstein
Family Foundation
Bessemer Securities Corporation
Bishop Gadsden Retirement Community
Blockhead Builders, LLC
Frederick W. and Doris E. Bristol Foundation
Brown Electric Company
Burriss Liquor Store
C. T. Lowndes and Company
Caddell Associates Inc.
The Cassina Group LLC
Charleston Bed and Breakfast Association
Charleston Branch Harbor Pilots
The Charleston Club
The Charleston Information Group LLC
Charleston Jewish Federation
Charleston Men's Chorus
Charleston Neuroscience Institute, LLC
Charleston Place
The Cleveland Foundation
The Coles Family Foundation
College Visits
Community First Bank
Corduroy Charitable Trust
Cougars LLC
CREW Charleston, Inc.
Deutscher Bruderliche Bund
Dewberry Foundation
Charles H. Dishman III Family Foundation Inc.
Dixie Furniture Company
Daniel D. Dolan Jr. Family Foundation
Dolphin Builders and Architects
Douglas J Hertz Family Foundation, Inc.
E and L Management Services, LLC
East Cooper Outboard Beneficent Group, Inc.
Eastern National Park Service
Elliott Davis, LLC

eThority, Inc.
Ferguson Enterprises, Inc.
Fox Music House, Inc.
Francis Marion Hotel
Francis Marion University Foundation
GenSpring Family Offices
The German Friendly Society
Gilbert Holdings LLC
The Harvey Ginsberg Foundation
Goer Charitable Foundation
The Greater Charleston Restaurant Association
Harbor National Bank
Hawkes Learning Systems / Quant Systems, Inc.
The Helmerich Trust
The Helmle-Shaw Foundation
Hillel: The Foundation for Jewish Campus Life
Holt Family Foundation
Howell Cay
Huge Law Firm LLC
Ingram Entertainment Inc.
International Studies Abroad
Jackson Davenport Opticians
JEM Restaurant Group
Jewish Federation of Greater Atlanta
Joanna Foundation
Juanita Greenberg's
Jupiter Holdings/Buck Lumber
KIRE, LLC
Kirkman Broadcasting
Kosman Foundation
KPMG LLP
John Liberatos Real Estate Company
Limehouse Produce Company
The Links at Stono Ferry
Lorraine G Vale
Low Road Foundation
Lowndes Properties
Mad River Foundation
Maersk Inc.
Magnolia Plantation Foundation
Manor Enterprise
Marine Terminals Management, LLC
Mediterranean Shipping Company, Inc.
Merrill Lynch Wealth Management
Joseph J. Miller Foundation
Montague-Betts Company
Michael James Moran Woodworked
Furniture, LLC
Morris Hardwick Schneider, LLC
Motley Rice LLC
Nelson, Mullins, Riley and Scarborough LLP
New York Life Insurance Company

The O'Brien Family Foundation, Inc.
Sanford H. & Barbara H. Orkin Foundation
Pain Specialists of Charleston
Parker Foundation
Periodontal Associates
Pi Kappa Phi
John Poston and Co.
The Printing Group
Pronetics Health Care Group
The Propeller Club of the United States
Regions Bank
The Rhode Island Foundation
Rigged Out, LLC
Patrick E. Ringwald Memorial Foundation
Rogers & Brown Custom Brokers
Ron Davis Realtors
Roper Saint Francis Healthcare
Rosen, Rosen & Hagood, LLC
Rotary Club of Charleston Fund
Rotary Club of Charleston
RTW
Salmons Dredging Corporation
D.L. Scurry Foundation
Select Health of SC
The Sledge Foundation, Inc.
Society of First Families of South
Carolina 1670-1700
Oscar & Mona Sokol Foundation
South Arts, Inc.
Southcoast Community Bank
The Sportsman's Shop
Stanford University
The Estate of Florence M. C. Stoertz
SunTrust Bank, Charleston
TBonz Restaurant Group
TD Bank
Term Enterprises, Inc.
Thompson Turner Construction
Town of Mount Pleasant
Trident Construction Company, Inc.
TSW II Management Company
U.S. Trust, Bank of America Private
Wealth Management
UBS Financial Services, Inc.
USAA
Vanguard Charitable Endowment Program
Vanguard Group, Inc.
The Variety Store
Whipper Law Firm
Worthwhile
Yellow Cab Company

* Deceased



GOLD SOCIETY

The **GOLD (Graduates of the Last Decade) Society** recognizes young alumni donors who contribute \$250 or more annually to the College of Charleston. GOLD Society gifts are a vote of confidence in the values of the College of Charleston and demonstrate an annual commitment to make the College a philanthropic priority. GOLD Society gifts have the power to help today's students define their own College of Charleston experience.

- Justin Kyle Acree 2004
- Ruth Will Alisaukas 2003
- J. Ryan Altman 2003
- Anonymous
- Sandon T Barth 2003
- Anna Wojtalik Batz 2003
and Brett W. Batz
- Briar Courtney Betancourt-
Sabillon 2003 and
Isaac Betancourt-Sabillon
- Anne-Coalter Betts 2011
- Kyle T. Boggs 2011
- Joan Brown and
Don H. Brown, Jr. 2004
- Anna Claire Burnett 2006
- Susan S. Campbell 2008
- Jeffrey Brandon Cochran 2004
- Nathaniel James Cochran 2007
- William Joshua Cooper 2010
- David W. Crowley 2002
- Emily K. Dalton 2003
- Laura Dana and
Eli Ladson Dana 2010
- Frances Annelle DeLuca 2004
- Meaomee Devos and
Bradley John DeVos 2011
- Sara Givler DeWolf 2002 and
Benjamin Karel DeWolf 2002
- Elizabeth Fulmer Eakes and
Charles Devin Eakes, Jr. 2005
- Ryan Jacob Eleuteri 2002
- Charles M. Enterline 2008
- Graham Leslie Ervin 2005
- Justin P. Gaeta 2009
- Amy Hille Glasscock and
William T. Glasscock II 2004
- Nicholas Collins Glover 2005
- Andrea Gorney and
David Luke Gorney 2003
- Wilson W. Greene 2003
- Michael W. Grueneberger 2003
- Elizabeth Shackelford Halstead 2004
and Chappell C. Halstead 2004
- Sarah Permenter Hays 2003
and Joshua J. Hays 2003
- Katherine Anne Heath 2008
- Nicholas Holdgate 2003
- Valerie Baker Howell 2002
and Scott S. Howell 2002
- Margaret Aemelia Hudson 2011
- Keith S. Johnston 2004
- Allison Suzanne Jones 2004
- Christina Dawn Kelley 2011
- George Philip Klein 2004
- Christina Callison Kubinska 2007
- Heather L. Kuch and
Aron T. Kuch 2002
- Erica Nicole Lanford 2003
- Stacey Lathem 2008
- Michael Elson Leitman 2004
- Andrew J. Maffucci 2006
- Katherine Brockington Marshall 2003
and James M. Marshall 2002
- Robert Jackson Martin IV 2007
- Michele York Mattox and
John Christopher Mattox 2002
- Jack F. Maybank, Jr. 2002
- Michael A. Morris 2002
- Natalie Whitney Murdy 2004
- Kimberly M. Novinger 2009
- Megan Emily O'Brien 2010
- Nicholas C. Pavia 2005
- Robert Brandon Pierce 2004
- Katherine H. Pomplun 2005
and Bryant Pomplun
- Bridget Bettelli Price 2003
and Kevin Price
- Sally L. Read 2007
- Rudy T. Rothseiden 2003
- Jordy Christian Schaffner 2002
- Louis C. Scheibla 2004
- Stephen Edward Scibal 2009
- Lauren S. Scott 2004
- Amy M. Gordon 2002 and
Joseph A. Shepanek 2007
- Dedrick L. Siddall 2002
- Marshall Simmonds 2011
- Cherie Westendorff Smith 2003
and C. Ryan Smith 2002
- Amy Mixson Stasiukaitis 2011 and
David Michael Stasiukaitis 2007
- Sebastian Anthony Steadman 2004
- Erin Elizabeth Stokes 2004
- Meghan Oakley Sutherland 2009
and Brandon James
Sutherland 2008
- Adam M. Townsend 2005
- Ashley Heltemes Tylus 2005
and David J. Tylus 2007
- Nicholas R. Walsh, Jr. 2002
- Matthew Thomas Wojslawowicz 2008
- Emily Sekula Wood 2005
- Heather Nicole Yenco 2007
- Gretchen M. Zoeller 2006



ATHLETIC DIRECTOR JOE HULL WITH LIVE OAK SOCIETY DONORS LEO FISHMAN, BURNET MENDELSON AND TONY MEYER '49.

LIVE OAK SOCIETY

Taking its name from the majestic live oak trees that make the College's campus so distinct, the **Live Oak Society** recognizes our most loyal donors (those who give consecutively for five years or more) who provide the roots of the College's philanthropic foundation. Live Oak Society donors are leaders in making the College of Charleston a priority year after year, and their generosity continues to advance the mission of the College.

20+ YEARS

Karen K. Abrams and Andrew L. Abrams
Robin M. Alexander and Brian E. Alexander 1990
Joe Allen
Carolyn Nesbitt Anderson 1970 and James P. Anderson 1955
Anonymous (2)
Mickie Asleson and Gary L. Asleson
Elizabeth Bramlett Baker 1981 and Charles J. Baker III 1980
Nell Prior Baldacchino 1967 and Joseph F. Baldacchino
Roslyn L. Barkowitz and Donald B. Barkowitz
Scooter DeLorme Barnette 1978 and George W. Barnette III 1958
JoEllen Basile and Jan Basile
Charlotte Small Bavier 1943
Jaclyn Krawcheck Berlinsky 1960
W. Dale Blanton 1982
Jeannette Moore Bowers
Sondra H. Branch and Lenord M. Branch 1968
Grier Gadsden Brown 1976 and William Glen Brown, Jr. 1976
Janice Clark and Malcolm C. Clark
Dorothy Gelson Cohen 1939
Claudia Cohen and David J. Cohen
Ann B. Connellee and William L. Connellee
Sherry Cox and Boyce V. Cox
Joan Severance Cunningham 1960 and Robert C. Cunningham
Mary Beth McKeon Dacey 1993 and Paul B. Dacey
Colleen G. Dargan and Perrin Q. Dargan III 1984
Joanne Davenport and Leslie B. Davenport 1947
Sally Davis and Alan J. Davis
Daniel B. Day 1983
Janet Deavor and James P. Deavor
Tamara K. DeMuth and Thomas N. DeMuth 1989
Beverly E. Diamond
Katrina B. Doig and Marion T. Doig III 1965
Anne Koster Donato* 1944
Donna Looms Emerson 1977 and Barry A. Emerson
Mary Cele Smith Faires 1943
Esther B. Ferguson and James L. Ferguson
Hope Morris Florence 1970 and Terry Florence
Jeffrey A. Foster
Susan W. Freeman and Harry W. Freeman, Jr. 1967
Jean Matthews Freeman 1945
Neva Anderson Gadsden 1986 and Richard H. Gadsden, Jr. 1981

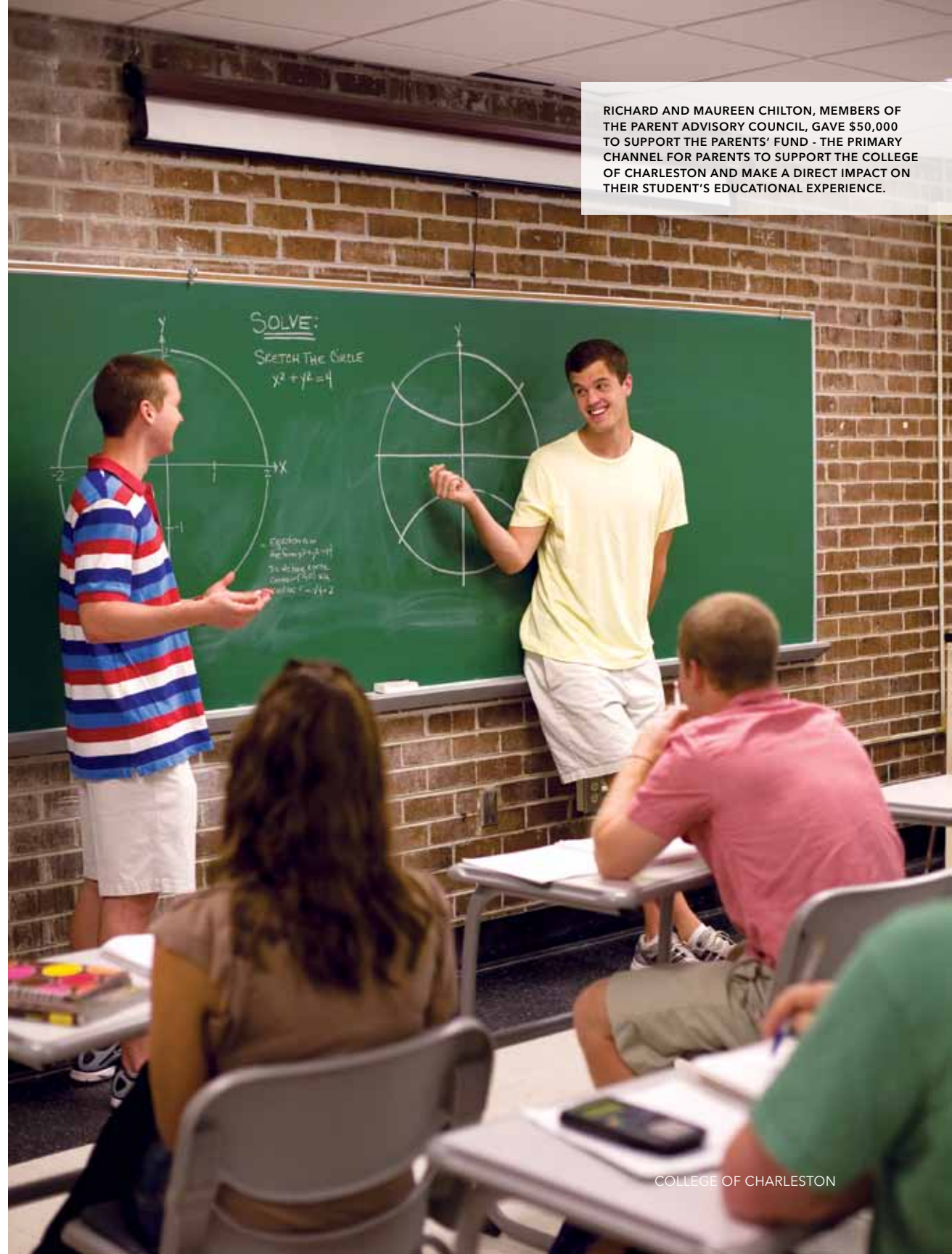
Lisa Alexander Gadsden 1978 and Frank M. Gadsden 1980
Harriet Lauper Goldberg 1985 and Charles S. Goldberg
Patricia Sullivan Gustafson 1972 and Kenneth S. Gustafson, Sr. 1975
Cecilia E. Haborak 1979 and George E. Haborak
Margaret McManus Hamilton 1975 and Milton E. Hamilton
Suzanne Dobbs Hardwicke 1965 and Wayne Hardwicke
Sylvia Craver Harvey 1958 and Charles Edward Harvey
Cynthia M. Heldrich and Frederick J. Heldrich III
Joyce N. Howe 1982 and John K. Howe
Gedney M. Howe III
Betty F. Howell and Roy A. Howell, Jr. 1946
Virginia Taylor Howell 1989 and Roy A. Howell III 1984
Carol Joy Mackey Hume 1975 and Corey D. Hume 1977
Colleen Wolpert Jernigan 1978 and Bobby Jernigan
Jean W. Johnson and Tapley O. Johnson, Jr.
Karen Burroughs Jones 1974
Sandra Harley Jones 1963 and Kenneth L. Jones 1963
Linda Jones and Gordon E. Jones
Roseann Dennis Jordan 1978 and Robert Waring Jordan 1978
Judith Kaiser and Charles F. Kaiser
Rebecca P. Kay and Ansel C. Kay IV 1985
Joanne Kennerty and William C. Kennerty
W. Frank Kinard
Anne Atwater King 1978 and Kenneth T. King 1979
Mitzi Kirshtein and Sam Kirshtein 1945
Townie T. Krawcheck and Leonard Krawcheck 1962
Sue A. Sommer-Kresse and John L. Kresse
Tina Lacey
Anne Burges Lake 1964 and Joel J. Lake
Josephine M. Lewis and Andrew H. Lewis, Sr.
Judith Blanchard Linder 1968
Rita W. Livingston and D. Thomas Livingston
Cynthia Harwood Malanos 1970 and George E. Malanos 1968
Amy Thompson McCandless
Penelope Jones McKeever 1969 and Francis Dennis McKeever
Rhett Mendelsohn and Joseph S. Mendelsohn
Tony Meyer 1949
Louisa Moore and Charles L. Moore, Jr.

Susan J. Morrison
 Marlizo Nelson and Rhame Nelson 1988
 Melody Nuss and Jerry J. Nuss 1990
 Christine Stiepel Osborne 1978 and
 C. Wayne Osborne, Jr. 1978
 Janelle Othersen and
 H. Biemann Othersen, Jr. 1950
 Tina Psillos Padgett 1978 and
 Gregory D. Padgett 1979
 Cissy Gibbons Parades 1975 and
 Michael R. Parades 1979
 Elise Schweers Peeples 1983
 and Paul W. Peeples, Jr.
 Jeryll H. Perlmutter 1983 and Martin Perlmutter
 Milward Deas Pinckney 1951
 and Lucian Pinckney
 Katherine J. Plair and James B. Plair, Jr.
 Anne Stender Puckhaber 1947 and
 Bernard F. Puckhaber 1950
 Linda Compton Ravenel and
 Daniel Ravenel 1972
 Ric R. Ravenel and Arthur Ravenel, Jr. 1950
 Zoe D. Sanders and Alexander M. Sanders, Jr.
 Joann Boyd Sherman 1997 and
 Mitchell L. Sherman
 Rebecca Shackelford Sigmon 1970
 and Lee M. Sigmon 1968
 Nancy Webb Stafford 1970 and
 Sam Stafford III 1968
 Creighton Mitchell Stork* 1949
 Daisy Porcher Stoudenmire 1957
 Melody Booker Taylor 1987 and
 W. Kurt Taylor 1984
 Ione L. Taylor and Carl A. Taylor, Jr. 1979
 Dana Robinson Tiller 1984 and
 John H. Tiller 1984
 Anita Condon van de Erve 1970
 Patience D. Walker
 M. Elizabeth Robinson Weaver
 1986 and David W. Weaver
 Lettie Pate Whitehead Foundation
 Teresa Brown Withrow 1989 and
 Randall P. Withrow 1990
 Bettye Wolfe and Leon K. Wolfe, Jr. 1949
 John A. Zeigler, Jr.

10 - 19 YEARS

Ilonka S. Adbo 1988 and Dave Abdo
 Deborah Adams and Jeffrey J. Adams 1991
 Marlene Alfred Addlestone 1964
 and Lawrence Bursten

Maria Corontzes Alfieris 1976
 and Cyrus P. Alfieris
 A. M. Allen
 Marsha M. Alterman and Douglas J. Alterman
 Susan Altman and Samuel H. Altman
 Kathleen Dew Amling 1992
 Ann M. Amos and William W. Amos 1978
 Emmy Lou Anderson and Peter R. Anderson
 Carolyn Nesbitt Anderson 1970 and
 James P. Anderson 1955
 Regina H. Anderson and
 Joseph B. Anderson 1986
 Nancy S. Andrus and Jan F. Andrus 1954
 Anonymous (3)
 Marla Appel and Sidney D. Appel 1959
 ARAMARK Services
 Jean Mosser Araujo 1983 and Mauricio Araujo
 Melissa Webb Arscott 1991 and
 Stephen F. Arscott 1990
 Douglas D. Ashley
 Associated Container Sales
 ATS Intermodal
 William Augustine, Jr.
 Ellen Avenoso and Frank Avenoso
 Dianne P. Avlon and John Avlon
 Elizabeth Morgan Baker and Neal Baker*
 Laurin D. Hayes-Baker 1996 and Michael V. Baker
 Edgar L. Barnett
 Patricia Baxter Barrett 1992 and
 William M. Barrett 1991
 Kevin T. Barrett 2001
 Timothy G. Barrett
 Cheryl D. Bates 1993 and William J. Bates
 Betty Beatty and Guy E. Beatty
 Joseph Louis Beaudrot 1977
 R. Philip Bees
 Marty P. Belk and Donald H. Belk 2000
 Jill Popalisky Bellacicco 1978
 and Allan J. Bellacicco
 Benefit Concepts
 Ellen D. Benke and R. Andrew Benke 1977
 Barbara K. Bernstein and Donald H. Bernstein
 Lois S. Berry and Jeffery N. Berry
 Thomas V. Bessent, Jr. 1978
 Harriet Easley Bessent 1983
 K. Tracey King Bible 1994 and Kenneth W. Bible
 Robert P. Bland, Jr.
 Blanche Blankenship and
 Tereance L. Blankenship 1982
 Maureen Boggs and Lloyd K. Boggs
 Marguerite Ann Bohne 1975
 Valerie B. Morris and Boris Bohun-Chudyniv



RICHARD AND MAUREN CHILTON, MEMBERS OF THE PARENT ADVISORY COUNCIL, GAVE \$50,000 TO SUPPORT THE PARENTS' FUND - THE PRIMARY CHANNEL FOR PARENTS TO SUPPORT THE COLLEGE OF CHARLESTON AND MAKE A DIRECT IMPACT ON THEIR STUDENT'S EDUCATIONAL EXPERIENCE.

Ann B. Borelli and Raymond F. Borelli
 Marie Terry Bosch 1986 and
 Michael R. Bosch, III 1987
 Jane C. Bowen
 Donna Kinsey-Ward Bowen 1981
 and Claude H. Bowen, Jr.
 The Brand Foundation of New York
 Carol Stern Brickman and Michael Brickman
 Fay Cohen Brickman 1943 and
 Jack P. Brickman 1942
 Marilyn Brilliant and Howard L. Brilliant
 Victoria H. Mann Brindley 1983
 and Paul J. Brindley
 Nancy C. Bristol and Ronald H. Bristol
 Betty Reames Britt 1960 and Henry F. Britt
 Jane Brooks and John J. Brooks
 Elaine Brunson Bucholtz 1977
 Lisa Buck and William H. Buck, Jr. 1984
 Alison P. Bullard and Michael C. Bullard 1992
 Brenda G. Burbage 1993
 Bonnie Grossman and Ken Burger
 Ann Dunning Burgess 1961
 John Hartnett Busch 1985
 Mary Ann Byrnes 1978
 Eda H. Cabaniss and Robert W. Cabaniss, Jr.
 Teresa Major Luhrs 1983 and William J. Camp
 Christel R. Carpenter and Rick L. Carpenter 1971
 Jeffrey W. Cary 1987
 Mimi Cathcart
 Marion Rivers Cato and Wayland H. Cato, Jr.
 Scott Cayouette
 Charleston Men's Chorus
 Chris Christopher and
 Remley Rivers Campbell 1968
 Patricia C. Clark
 Katharine Wilkerson Claussen 1979 and
 Arthur Chris Claussen III 1978
 Coastal Community Foundation of SC
 Karen G. Coble and James W. Coble, Jr. 1977
 Community First Bank
 Amy S. Condon and Henry G. Condon 1983
 Dorsey Condon and Clarence M. Condon III
 Marie Jeffords Condon 1970
 Todd Aaron Confarotta 2000
 Congregation of Adas Yeshurun
 Virginia C. Conlon and Kevin J. Conlon 1991
 Jane M. Corbin and Warren Corbin
 Christopher Lee Cordes 1994
 Sharon Pierce Coursey 1977
 and Charles Coursey
 Janet Heath Cracraft 1985 and
 Scott Anthony Cracraft, Sr. 1983

Croghan's Jewel Box
 Amelie S. A. Cromer and Philip E. Cromer 1981
 Claire P. Curtis
 Mary Beth McKeon Dacey 1993
 and Paul B. Dacey
 Linda B. Darrington and
 Mark W. Darrington 1987
 J. Belk Daughtridge
 Janice Peyton Davidson 1983
 Mary Decker and James D. Decker
 Travis Bowles Dew 1992 and
 Thomas R. Dew III 1990
 Thomas R. Dew
 Dixie Furniture Company
 Mary F. Dolliver and Joseph F. Dolliver
 Sylvia K. Dreyfus and Robert L. Dreyfus
 Mary Catherine Donnelly Dubois
 1984 and Joseph Dubois
 Whitney O. Duffy and Edward W. Duffy, Jr. 1983
 Carol Simmons and William Marvin Dulaney
 Deborah T. Duwel and Philip S. Duwel 1965
 James Steven Dykes 1979
 E and L Management Services, LLC
 Lynn F. Eads and Albert E. Eads III 1982
 Meb Eady and John L. Eady 1963
 Barbara Eaton and George Eaton
 Elizabeth Eaton and Frank E. Eaton 1960
 Dayna Elliott and Richard D. Elliott
 Barbara J. Ellison and Haskell Ellison
 Evelyn W. Engel and Herbert A. Engel
 Shaun Hunter Englehart 1985
 and John Englehart
 Joan Johnson Erbskorn 1993 and
 Jeffrey Martin Erbskorn
 Susan Euart and John F. Euart
 Donna Londergan Evans 1985
 and Eugene C. Evans
 Henrietta Mikell Evatt 1987
 Family Circle Cup
 Betsy Allen Fanning 1987 and Jack Fanning
 Fidelity Charitable Gift Fund
 Terry Becker Fisher 1984 and Dennis J. Fisher
 Jaquelin P. Fleet
 Lisa Sterling Frizelle 1976 and
 Timothy M. Frizelle
 Sallie J. Fuerth
 Darryl Jerome Fyall 2001
 Rodney A. Gaskins
 Martha Wilson and George David Gentry
 Susan Lambe Gilliam 1977 and Mark E. Gilliam
 Jennifer Thomas Godfrey 1998
 and Edward Godfrey

Patricia R. Goff
 Norma Goldberg and Sanford B. Goldberg 1961
 Suzanne Googer and Marcus D. Googer
 Miriam Brotman Gordin 1955 and David Gordin
 Nancy Gorski and Paul T. Gorski
 Elizabeth Tiller Gourdin 1980 and
 Theodore G. Gourdin 1981
 Judith L. Green and Mark R. Green
 Eddie Gregory
 Deborah Wise Guerry 1980 and
 John Everett Guerry III 1977
 Keith M. Guerry 1976
 Anne M. Hagood and Jimmy Hagood
 Barbara Hallberg and Harold Thomas Hallberg
 Richard R. Hallin
 Libby Hamilton and Ronald T. Hamilton
 Elizabeth Stevens Ham 1980 and
 Forrest Cleave Ham
 Lizanne Hanckel and John Hanckel
 Joyce Tull Hardin 1975 and Tom Hardin
 Dorinda Q. Harmon and Terry Harmon
 Eileen S. Harris 1978
 Ann Smith Hatcher 1982 and Robert C. Hatcher
 Kenneth E. Hauck 1958
 Wynne Elliott Outlaw Hawkey 1991
 and Brian K. Hawkey 1990
 Mariana Ramsay Hay 1982 and
 David M. Hay 1981
 Hay Tire Company, Inc.
 Claire Patricia Healy 1988
 Susan B. Heath and Arthur J. Heath
 Hebrew Orphan Society
 Elaine Heckelman and Joseph Heckelman
 Dorothy S. Hefner and Frank L. Hefner
 Ann M. Hellman and Max B. Hellman
 Lucius W. Heriot, Jr.
 Hibernian Society Foundation
 Pamela Hightower and James F. Hightower 1982
 Rhoda G. Hiott 1977
 Kelly Kaiser Hiott 1986 and
 Stephen B. Hiott 1986
 Elaine Shulman Hirsch 1960 and Paul M. Hirsch
 Barbara Kane Hodgson 1977 and
 Thomas E. Hodgson
 Jerry W. Holforty 1977
 Charles F. Hollis, Jr.
 Lori D. Hollmaier 1979 and Larry B. Hollmaier
 Deborah H. Holmes 1980 and Thomas L. Holmes
 William Barnwell Holt 1974
 Jennie Houser
 Andrea M. Howe
 Janet McGee Howe 2011 and Russell D. Howe

Virginia Taylor Howell 1989 and
 Roy A. Howell III 1984
 Valerie Baker Howell 2002 and
 Scott S. Howell 2002
 Lee Jones Hrechko 1984 and
 Randall Alexander Hrechko
 Susan Stansell Huggins 1989 and
 Tracy S. Huggins 1991
 Constance L. Hughes and Lowry D. Hughes
 Elizabeth Young Hund and Paul W. Hund, Jr.
 Elizabeth Bargmann Hunter 1947
 and James E. Hunter
 Noelle Ireland and Michael C. Ireland 1997
 Patricia Ring-Jablonski and Richard C. Jablonski
 Jackson Davenport Opticians
 Carole Lane Jaques 1963 and
 Charles A. Jaques 1963
 Margaret M. Jamieson and James W. Jamieson
 Carole Lane Jaques 1963 and
 Charles A. Jaques 1963
 Clarence Bradford Jeffcoat, Jr. 1992
 Mignonette Jensen and Vern Jensen
 John Poston and Co.
 Terry L. Johnson and Carl R. Johnson 1971
 Cynthia Hay Johnson
 Lucie M. Jones and Garvin Jones
 Mary J. Jordan and John M. Jordan, Jr. 1962
 Roseann Dennis Jordan 1978 and
 Robert Waring Jordan 1978
 Jupiter Holdings/Buck Lumber
 Carol A. Kelly and Patrick J. Kelly
 Kay Kennerty
 Jo Ann Q. Kent and Thomas Kent
 Liane Terry Kerr 1992 and James Joseph Kerr, Jr.
 Anne Atwater King 1978 and
 Kenneth T. King 1979
 Michael S. Kogan
 Kaye Koonce and James Randall Koonce 1987
 Jeffrey John Lamberson 1993
 Vickie C. Lambert and Martin J. Lambert 1982
 Marie M. Land and John C. Land III
 Mary Wilson LaRoche 1979 and Stan LaRoche, Jr.
 Mary E. Layton and David A. Layton
 Rebecca D. Lee and Hampton J. Lee 1984
 Dianne Lever and Benjamin R. Lever III
 Elizabeth R. Lewine
 Marcia Lighthart and David J. Lighthart 1981
 Catherine Cooper Lipp 1997 and
 James Lewis Lipp 1999
 Stephen W. Litvin
 Kathleen Holtz Low 2000 and
 David M. Low 1998

Melissa Bernier Lucas 1996 and Jon Lucas
 Elisabeth S. Lynch and Spencer J. Lynch
 Maersk Inc.
 Cathryn Hill Mahon 1980 and
 Thomas Todd Mahon II 1974
 Cynthia Harwood Malanos 1970 and
 George E. Malanos 1968
 Rose Y. Mark
 Susan Clark Marlowe 1976 and
 Robert William Marlowe 1971
 Sharon Martin and Jerold Martin
 Ted Martin
 Marianne L. Martino and Ralph Martino
 Michael W. Massey, Jr. 1987
 Susan D. Master and Michael Master
 Cynthia Malony Masters and
 Ernest L. Masters, Jr. 1972
 Tina Simmons Masterson 1995
 and Douglas S. Masterson
 Elizabeth Gregorie Matthew 1942
 Mai McCrory
 Gwen McCurdy and Layton McCurdy
 Katherine Moorer McDermott 1979 and
 James Patrick McDermott 1978
 Allison Shire McKittrick 1995 and
 Clifford W. McKittrick 1997
 Lizabeth Ann McLeod 1985 and
 David M. Kushubar
 Lynn McNally and Thomas McNally
 Doris L. Meddin
 Vickie Menard and Michael L. Menard 1980
 Jennifer Mendelsohn and
 David B. Mendelsohn 1994
 Jane Mendelsohn and Burnet Mendelsohn
 Kim Meyer and Donald B. Meyer
 MI-TECH, Inc.
 Melissa Tarte Michel 1992 and
 Mark C. Michel 1991
 Dolores Floyd Millings 1993 and
 Ronald A. Millings 1994
 Kerry Mobley Missel 1976 and
 Frederick G. Missel, Jr. 1976
 Jean Mitchell and David C. Mitchell
 Robert M. Moise and Pamela Moise
 Kimberly Deans Molthan 2000
 and Mark A. Molthan
 Jane L. Moore and Tyler W. Moore 1995
 Annaliza Oehmig Moorhead 1992
 and John Kirkman Moorhead
 Cathy Morse and John Tucker Morse
 Lawrence Hale Moser 1982
 Alexa S. Mosteller and Charles S. Mosteller 1981

Susan Rudisill Myers 1990 and Andrew Myers
Carol A. Myself and Allan L. Myself
Mary J. Neff 1987
Sue Nelson and Paul T. Nelson
Robert F. Neville
Teresa Davis New 1996 and Robert New
Diane S. Newman and Roger Newman
Judy W. Olitsky and Harvey J. Olitsky
Oscar & Mona Sokol Foundation
Haley C. Ottley and Julian T. Ottley 1990
Cissy Gibbons Parades 1975 and
Michael R. Parades 1979
Rebecca C. Parker and John H. Parker 1993
Barbara Patrick and Gardner Patrick
F. Michelle Adkins Patterson 1987
and Douglas K. Patterson
Edwin S. Pearlstine, Jr.
Robin Maurer Pennington 1977 and
David Ashley Pennington 1977
Eileen Pflum and Ted Pflum
Richard P. Pierce 2001
Margaret M. Powell and John E. Powell
Robin Truett Powell 1989 and
Jeffrey Scott Powell 1990
Christine W. Pringle and Walter M. Pringle 1989
Mary Baker Pringle 1968
Marsha Defoe Pringle 1979 and
Walter M. Pringle IV
Pronetics Health Care Group
Cynthia Ann Propst 1981
Robin H. Query and Erwin L. Query, Jr. 1977
Rah-Rah, Inc.
Alexander W. Ramsay
Ellen Rodenhauer Rebman 1999
and William P. Rebman III
Kathryn Gianatos Rentiers 1951
Jennifer Richardson and Joseph Richardson
Betty B. Riggs
Charles Rittenberg 1995
John Minott Rivers, Jr.
Patricia G. Rivers 1999 and James A. Rivers
Claire Z. Robinson and Clyde Robinson
Renee Buyck Romberger 1981
and Randy Romberger
Grady G. Roney
Miriam Rosenblum and Jeffrey M. Rosenblum
Tricia Roth and Benjamin Roth
Mary Sandlin Rowell 1971 and Jake C. Rowell
Rose Condon Hamm Rowland
1972 and John Rowland
Susan L. Rozzi and Claude J. Rozzi

Renee Couturier Runey 1979 and
Leon G. Runey 1973
Desiree Hall Runey 1976 and
David C. Runey 1972
Aubyn Runey and Joseph F. Runey 1969
Donna Hutchinson Runey 1981
and Patrick C. Runey 1977
Brenda C. Rush and Robert M. Rush
Cheryl W. Sargeant and Mark D. Sargeant 1987
Janet Wells Scarborough 1998 and
George C. Scarborough 1975
Theresa H. Schuyler and Dean Schuyler
Margaret Price Schwacke 1950
Michele Hendren Seekings and
Michael S. Seekings
Beverly D. Seinsheimer and
Walter G. Seinsheimer, Jr.
Margaret Schwacke Sellers 1981 and Carl Sellers
Mindelle K. Seltzer and Norton M. Seltzer
Regina Kronsberg Shapiro and
Samuel R. Shapiro
Gary E. Shealy 1982
Boo Sheppard and Macon Sheppard
Kathryn Edwards Sherrod 1993 and
William Llewellyn Sherrod II 1993
Linda Shortridge and Kenneth Shortridge, Jr.
Randall Keith Shull 1979
Barbara Hollings Siegling 2001
Bonnie Silverberg and Edward Silverberg
Laura Dagostino Sinteff 1990 and Robert Sinteff
Skirt! Magazine
Kevin Michel Smith 1992
Susan M. Smythe and Henry B. Smythe, Jr.
Cheryl Campbell Snellgrove 1988
Marcia Susan Snyder 1993
Marcia Spar and Harvey M. Spar
Doris A. Spaulding and George G. Spaulding
Jean Rouse Spell 1958 and Pete Spell
Ruth Barrett Stanaszek 1949
Diana Stauffer and Michael J. Stauffer 1995
Ellen S. Steinberg and Robert M. Steinberg
Bobbi Jo Stone 1993 and Henry L. Stone
Deb Strickler and Paul Strickler
Katherine Watkins Strubeck 1980 and
Louis R. Strubeck, Jr. 1980
Ashley Gerhardt Stuckey 1999 and
Scott Ray Stuckey 1992
Marie Hebert Sullivan 1987
and Kenneth Sullivan
Emily Molony Swanson 1989 and
Steve Dean Swanson 1989
Karen Tarpey and John David Tarpey 2000

Deborah Parks Taylor 1977 and
Ervin S. Taylor 1976
TBonz Restaurant Group
Susan Tersillo 1981
Nancy Tezza and Mark J. Tezza 1980
Cynthia Cramer Thomas 1990
and James R. Thomas
Thomas E. Thornhill
Mark C. Tiedje
Carlin Morris Timmons 1997
and Clyde W. Timmons
Marlies G. Tindall
Sharon Toporek and Edwin Toporek
Terry Tranen
Donna Lawhon Trapp 1979
Janice Kirshtein Turner 1988 and James Turner
Belle Stoddard Tuten 1991 and
James H. Tuten 1990
Henry Tuten
Carolyn Schanen and Jeffery L. Twiss 1984
Uricchio, Howe, Krell, Jacobson,
Toporek, Theo and Keith, PA
Julie Radnor Usherwood 1989 and
Robert W. Usherwood
Vanguard Charitable Endowment Program
Kathleen M. Wagner and
Zachary G. Wagner 1994
Courtenay T. Wallace 1986
Sue Simons Wallace
Sharon Walsh and Michael B. Walsh 1981
Lee Ann Mappus Walsh 1977 and Dale Walsh
Beverly Ward and John T. Ward
Mary Ellen L. Way and Charles S. Way, Jr.
Lisa B. Weil and Adolph Weil III 1979
Dorothy Weiner
Caroline Jones Weinheimer 1951 and
Charles A. Weinheimer, Jr.
Sarah Wilkins Weiss 1982 and Wayne Weiss
Wendy Anne Welch 1990
Frances C. Welch
Darrell M. Wells 1996
Wells Fargo
Caroline Welch West 1993 and William West
Westby Slade 1985
Elizabeth Cahill Whaley 1993 and
James C. Whaley, III 1993
James C. Whaley
Jacqueline M. Whelan and
Stephen W. Whelan, Jr. 1975
Eva Layne Wicks 1983 and James L. Wicks
Thomas R. Wieters
M. Kathleen Wiley and Patrick R. Kelley 1994

Kathryn Clarke Wiley 1997 and William Wiley
Carol S. Williams and George W. Williams, Jr.
Harriet P. Williams and George W. Williams
Libby Winthrop and John Winthrop
Teresa Brown Withrow 1989 and
Randall P. Withrow
Elizabeth M. Guerard Wright
and Richard T. Wright
Cheryll Novak Woods-Flowers 1981
and Harold C. Flowers
Tomi G. Youngblood and M. William Youngblood
Alvin Zak
Mindelle R. Ziff and Loren R. Ziff
Anita Goldberg Zucker

5 - 9 YEARS

Roger W. Ackerman
Anne Dixon Adams 1993 and Mark A. Adams
Hazel Adkins
Margaret Olivia Sowell 1980 and R. Paul Aftree
The Agricultural Society of South Carolina
Ann Chapman-Ailstock and
Charles F. Ailstock 1966
Mary A. Akers and Randy L. Akers
Sharon Wakefield Alderman 1985
and James F. Alderman
Allen County Public Library
Lisa Odabasi and Robert J. Alpino
Susan D. Altman and Charles S. Altman
Cynthia Caddelle Alvanos 1984
and Alke A. Alvanos
Joy English Anders 1980 and Bryan Anders
Jane Anderson and Allan J. Anderson
Renee D. Anderson and Ivan V. Anderson, Jr.
Florence Robinson Anderson 1990 and
Thomas Randolph Anderson 1977
Anonymous (19)
Judith E. Appel and Samuel Appel
Margaret Stroman Archer 1994
and David W. Archer 1991
Marilyn Armstrong and Alan Armstrong
Katherine Howard Arnold 2000
and Jean R. Arnold
Gerry Sue Arnold and Norman J. Arnold
Dottie Ashley and Franklin B. Ashley
Atkinson Pool Co. & Hot Springs Spas
Stephanie Wohn Auwaerter
Cynthia L. Hollen and Philip Avery
Laura Hills Avinger 1983 and
James F. Avinger, Jr.
Linda Aydlette and Derwood L. Aydlette, Jr.

Sandra Milner Ayoub 1963 and Pete Ayoub
Bob Bagley
Gaillard Townsend Bailey 1967 and James Bailey
Vickie Baker and Tommy B. Baker
Earle David Balis 1942
Nathaniel Ingraham Ball IV
Banks Construction Company
Nancy Leopold Banov 1988 and Charles Banov
Gretchen S. Barbatsis
Nella Gray Barkley
Valerie Manatis Barnett 1984
and William Barnett III
The Barnett Foundation Trust
Nancy Thompson Barnwell and
Nathaniel Elliott Barnwell
Shirley Baucom and
Herbert Wayland Baucom III 1991
Doris Faye Baumgarten
Genevieve Handal Beach 1987 and RJ Beach
Amy Tibbals Beale 2001 and Evan Beale
Beatty Realty Company
Ann Ramay Beauchamp 1996
Thelma Becker
Nancy Beckham and
Stephen Robert Beckham 1978
Laura Stuart Becton 1993 and
James L. Becton, Jr.
Elena Bell and Alex Bell
Jane Benson and George Benson
Eve Berlinsky and Norman Berlinsky
Mortimer Bernanke
Cydney G. Berry
Marlene Maher Bilton 1957 and
Robert L. Bilton 1955
Bishop Gadsden Retirement Community
Mikki Blackman and Norman B. Blackman
Nancy Wilkins Blakeney 1961
and E. DuBose Blakeney
Sol Blatt, Jr.
Blockhead Builders, LLC
Katharine Jean Bloder 1991 and Gary F. Bloder
Stephanie Blue and H. Scott Blue
Bess Brockington Bluestein 2002
and Brett A. Bluestein 1997
BMW Corporation
Dorothy S. Bodie and Hoyt Bodie
Sylvia M. Boineau and Maxcy C. Boineau 1958
Martine Boudreaux 1996
Michelle Bouvette and Pierre E. Bouvette 1981
Saundra Ward Bowns
Sharla A. Gould and James F. Bowring 2000
Lee Breeden and James O. Breeden



IN 2011, THE GAVALAS-KOLANKO FOUNDATION (GKF) AWARDED SEVEN SCHOLARSHIPS TO STUDENTS AT THE COLLEGE. GKF HELPS MAKE "EDUCATION WITHIN REACH" FOR SOUTH CAROLINA UNDERGRADUATES PURSUING A COLLEGE EDUCATION DESPITE PHYSICAL LIMITATIONS.

Eileen Brenner and Milton A. Brenner
Gerald J. Bresnihan 1983
Alice H. Brewer
Ethel S. Brody
Patricia Slaughter Brown 1979
and William S. Brown, Jr.
Carol L. Browne and Robert A. Browne
Janet Brownstein
Greyson L. Bryan
Heather Hardy Bryan 1993 and
Jason G. Bryan 1993
Ben Bryson
Kathleen Porcher Buchanan 1980
and Randy Buchanan
Sharon Buehler and William F. Buehler
Priscilla D. Burbage and Walker Burbage
Elizabeth Middleton Burke 1994
and Richard Burke
Betty Wall Burn 1949 and
H. Cameron Burn, Jr. 1949

Alberta Hartnett Busch 1945
Elizabeth L. Colbert-Busch 1988 and
Claus W. Busch III 1990
Richard Douglas Cain 1986
Scotty W. Cannon 1994
Robert E. Cape
Frances Willeford Carlisle 1940
Carlock, Copeland, Semler & Stair, LLP
Irene L. Carr
Cornelia Carrier
Tricia Carter and Benjamin M. Carter, Sr.
Jane M. Carter
Jennifer K. Casasco and Paul A. Casasco
Judith Cato and Edgar T. Cato*
Jon Chalfie
Judith K. Champion and
R. Wesley Champion 1988
Jill Tate Chapman 1997 and Troy V. Chapman
R. David Chard
Marnie Chardon and Marc Chardon

The Charles Delmar Foundation
Charles Stewart Mott Foundation
The Charleston Club
Charleston Wine + Food Festival
Lucia Childs and John H. Childs
Pamela Canant Chivers 1977 and Carl E. Chivers
Sharon G. Choice 1994 and Isiah Choice
Jane Chrisman and Mason R. Chrisman
Kay Ciganovic and Dennis D. Ciganovic
City of Charleston
Gail Clark and Robert E. Clark 1976
Donna M. Clement and Geoffrey P. Clement
Demetria Noisette Clemons 1975
Kathy Cloessner and Paul Cloessner
Kimberly J. Lathbury-Clontz 1992
and Bryan K. Clontz 1993
Clare Cochran 1981
Jeffrey Brandon Cochran 2004
Mary Ann K. Colbert and Timothy J. Colbert
Tessa Hendrix Collins 1985 and Cal Collins

Joanne Morris Comar* 1956
Debbie Coggin Compton 1985
and David J. C. Compton
J. Joseph Condon, Jr.
Eleanor Condy and William J. Condy
Martha Connell and Kevin Connell
Brian E. Connolly 2001
Caroline O'Rourke Cook 1979 and Dixon Cook
Carol Cook and William E. Cook 1968
Pamela Ready Cook and Larry Thomas Cook
Patricia Copeland and Earle V. Copeland 1993
Maria A. Cordova and Carlos F. Salinas
Jamie Corkran and Sewell Corkran III
Pam W. Corn and William C. Corn
Joseph Corvaia 2004
Nancy S. Coursey 1988 and William Coursey
Randolph Cowart, Jr.
Charlotte Lee McConnell Cox 1996
and Eric S. Cox 1993
Amy P. Coy and Jason P. Coy

Linda Swain Crabbe 1978 and Mark Crabbe
Ronald Terry Craig 1983
Jocelyn Craig and Michael Craig
Carolyn Cremins and Bobby Cremins
Mildred M. Crispyn and G. Joseph Crispyn
David W. Crowley 2002
Josephine A. Cruthers and David Cruthers
David Murry Dabney 1999
Donna Hyatt Dana 1978
Sheffield Wilson Dana 1963 and Robert G. Dana
Anna D. Dangerfield and
Timothy N. Dangerfield 1976
L. Cherry Daniel 1975
Georgia Homer Darby 1985 and
John Charles Long Darby
Ann M. Daughtridge and
Elijah L. Daughtridge III 1993
Rebecca R. Davenport
Jill Rabon Davidge 1982 and Nick Davidge
Leigh A. Davis and Ryan P. Davis 1994
John G. Davis
Davie L. Davis and James C. Davis
Margaret Johnson Davis
Mary Walters DeAntonio 1973
Justa B. Debnam and
George F. Debnam, Jr. 1994
Sandra E. Deering and Spencer S. Deering
Kathleen Madlinger Dempsey 1977
and Davis W. Dempsey, Sr.
Leilani DeMuth
Sara Givler DeWolf 2002 and
Benjamin K. DeWolf 2002
Rhea Giesy Dexter 2000 and Brad Dexter
Jane Lesto Die 1980 and Mark Die
Rosanne DiFonzo and Mario DiFonzo
Edmond A. Dixon
Dixon Hughes, PLLC
D.L. Scurry Foundation
Elliott Dodds
John Dolven
Sarah L. Donnem
Catherine Sandlin Dority 1999 and
Roland William Dority 1991
Kelly Douglass and John D. Douglass 1999
Carolyn Draisin and Neil W. Draisin 1965
Larry Driggers
Alicia J. Dubin and William R. Dubin
Ellen Duncan
Calvine Dunnan and Douglas M. Dunnan
Robert Dziadosz
Elizabeth Fulmer Eakes and
Charles Devin Eakes, Jr. 2005



LILY MORTIMER '12, AN ART HISTORY MAJOR, HAS PROVIDED CONSIDERABLE SUPPORT TO THE ART HISTORY PROGRAM IN THE SCHOOL OF THE ARTS DURING HER TIME AT THE COLLEGE.

Susan Edgley and Dennis Edgley
 Rita C. Edinger and John R. Edinger
 Nancy D. Edwards and Ralph Edwards
 Pauline Egelson
 Margaret L. Ehrhardt 1967
 Ryan Jacob Eleuteri 2002
 Elliott Davis, LLC
 Dayna Elliott and Richard D. Elliott
 Neel Lane Ellison 1993
 David Ellison
 Deborah L. Ellison and Morris A. Ellison
 Joe Engel
 Joanne B. Epley
 The Estate of Margaret K. Sullivan
 Yvonne duFort Evans 1958 and
 L. Wilbur Evans 1951
 Kathryn K. Evans and Beau B. Evans 2001
 Rella Eysen and Alan F. Eysen
 Linda L. Fantuzzo 1978
 Lisa Harrell Farmer 1986 and Sean Farmer
 Helen Fassuliotis and George Fassuliotis
 Nancy G. Fedder
 Judith G. Fellers and Henry Fellers
 Suzanne Cashion Ferrara 1979 and
 Robert M. Ferrara 1972
 Lisa K. Ferrett 1974 and Donald A. Ferrett 1976
 Lindsay Moon Findley 2004
 Prudence Finn and William A. Finn
 Charlotte Flint and Michael J. Flint 1977
 Melanie S. Floyd and Alfred J. Floyd, Jr.
 Mary Miller Ford 1971
 Mark P. Forster 2006
 Alfred Francis Foster 1980
 Foundation For The Carolinas
 Harold I. Fox 1947
 Karen Fradua
 Karen Fraser and Christopher B. Fraser
 JoAnn Frederick and Edward F. Frederick 1978
 Alberta Way Freeman and
 Robert L. Freeman 1978
 Stephanie Infinger Frick 1983
 and Walter M. Frick
 Margaret Collins Frierson 1985
 and Gregg N. Frierson
 Irwin H. From
 Christopher Michael Fulmer 2000
 Claire K. Fund
 Marie Furlano and Richard Furlano
 Joan Swanson Gaetke 1974
 and Theodore Gaetke
 Lynn Gagliardi and Michael E. Gagliardi
 Sarah Lynn Gainey 1966

Patricia Galiley 1988 and Robert A. Galiley II
 Jane G. Riley-Gambrell 1972
 and James Gambrell
 Jennie K. Garfinkel and Max Garfinkel
 Kelli Marlene Garrett 1989
 Birgitta Gaud and William Steen Gaud 1965
 Virginia Gauss
 The Gavalas-Kolanko Foundation
 Gaylord and Dorothy Donnelley Foundation
 Susan Moore and Andrew Eugene Geer III 1983
 William Chad George
 Jennifer Gianoukos and
 Andrew A. Gianoukos 1994
 Anthony James Gianoukos 1981
 Gianoukos Brothers, LLC
 Laura Gianoukos and James A. Gianoukos
 Suzanne Giffen and Terry Giffen
 Janet Gilston and David M. Gilston
 Jerry D. Gimarc and Benjamin M. Gimarc
 Amy Hille Glasscock and
 William T. Glasscock II 2004
 Edward A. Goldberg
 William H. Golod
 Marion G. Goodman and Kenneth A. Goodman
 Jane H. Goodridge
 Enrique G. Graf
 J. Michael Grant
 Pat Gray and Timothy Gray
 Bill Green
 Ann Greenberg and Carl Greenberg
 Leah D. Greenberg and Raymond S. Greenberg
 Phillip H. Greenberg
 Kathleen Harleston Greene 1969
 and James R. Greene
 Glenna D. Greenslit
 Michael W. Grueneberger 2003
 Martha Ellis Gwin 1985
 Cecilia E. Haborak 1979 and George E. Haborak
 Carol P. Hacker and Ronald F. Hacker
 Michael W. Haga
 Ann Hastings Hahn 1985 and Tom R. Hahn
 Barbara Hall
 Stephanie Hall
 Raphael M. Haller
 Emily Haly and Adam J. Haly 1994
 Linda Hammill and Thomas A. Hammill III 1988
 Nancy Hart Miller Hamrick and
 Fitzhugh N. Hamrick
 Devon Wray Hanahan 1987 and Bill Hanahan
 Nikki Hardin
 Loretta G. Harrison
 Sylvia C. Harriss and W. Lee Harriss

Susan Hartman and John C. Hartman, Jr.
Elizabeth Haskin and William B. Haskin, Jr. 1986
Diane Reinwald Hastings 1992
and Michael D. Hastings
The Hat Ladies
Sarah Permenter Hays 2003 and
Joshua J. Hays 2003
Denise L. Heaney and Brian N. Heaney 1999
Gloria Russell Heberling 1951
and Ward Heberling
Lyn B. Helfers and Eric C. Helfers 1966
Herzman-Fishman Foundation
(Leo and Carol H. Fishman)
Cheryl Hay and Henry M. Hay III 1985
Marilynn W. Hill and John A. Hill
Jane P. Hill and John M. Hill
Tula Zecopoulos Hilyer 1991 and
Randall S. Hilyer 1984
Elizabeth Koth Hinesley 1963
and Madison Hinesley
Mordenai Raisin Hirsch 1938
Anne Castrichini Hodaly 1979
and Tawfiq F. Hodaly
Eleanor Rogers Hodges 1985
Elizabeth Holder and Thomas M. Holder
Cynthia L. Hope 1988 and
William Daniel Dickson
Isabel Ward Hopkins 1986 and John R. Hopkins
Patricia Horton and Richard Horton
Valerie Baker Howell 2002 and
Scott S. Howell 2002
Sherri Montgomery Howie 1987 and
Theodore V. Howie, Jr. 1983
Barbara Hubschman and Harold Hubschman
Katy Hufnagle and Jon Hufnagle
Mark Carter Huggins II 1995
Vivian Viles Huguley 1974 and
John E. Huguley, Jr. 1972
Peter S. Hyndman
Patricia Lybrand Iler 2005
Virginia Imershein and Richard E. Imershein
Deborah H. Imperatore and Harold J. Imperatore
Sharon Odom Infinger 1981
and Marvin D. Infinger
Misty Nicole Isak 1999
Monique Falk Jacobs 1989 and
Thomas Mark Jacobs
Donna Floyd Jacobs 1976 and Jeffrey M. Jacobs
Marsha Jacobson and Richard Jacobson
Andrew C. Jaffee 2005
Sharon G. Jennings
Jewish Federation of Greater Atlanta

John Liberatos Real Estate Company
Donna Johnson and Gary W. Johnson 1976
Marilyn Johnson and Edwin Johnson
Judith Johnson
Katharine Creighton Johnson 1966
and Jack F. Johnson, Jr.
Melissa Merlau Johnson 1997
Kristen Carlisle-Hickey Johnson
1997 and Beau B. Johnson
Mary G. Johnson and Marshall D. Johnson
Margaret Johnston and Bradley L. Johnston
Harold W. Jones
Richard K. Jones
Sandra Harley Jones 1963 and
Kenneth L. Jones 1963
Sharon Louise Jones 1993 and Earl H. Jones III
Kimberly A. Jordan and Creg M. Jordan 1990
Raad Joseph
Ellis I. Kahn
Pamela Kaplan and Stanley Martin Kaplan
Cheryl R. Karesh and Stephen M. Karesh 1965
Marshall N. Katz
Barbara Keil 2001 and Julian E. Keil
Sherry Kelley and Michael A. Kelley
Sarah Kemp and Taylor A. Kemp 2005
Daniel A. Kendall 1998
Kathy Kennerly and John Kennerly
Maureen W. Kerrigan and Stephen R. Kerrigan
Lynne Loring Kerrison 1982 and L. Buist Kerrison
Robert N. Kersey IV
Lenora Kessler and Raymond A. Kessler, Jr.
Sheryl Kimerling and Jonathan Kimerling
Amy McDonald Kinard 1977 and
Jeffery E. Kinard 1977
Margaret B. Kirchner and
Kenneth J. Kirchner 1979
Christy Kirkland and John B. Kirkland
Kite Foundation, Nancye B. Starnes
George Philip Klein 2004
The Knox Foundation
Thomas Frederick Koester III
Carol Kohn and Warren A. Kohn
Julie A. Kornahrens 1984
Kosman Foundation
Lora R. Kratzok and David G. Kratzok
Shelley S. Kriegshaber and
Robert M. Kriegshaber
Marcus E. Kronick
Marsha Y. Kronick and Richard A. Kronick
Jon C. Kuczynski
Paula Kutcher and Leslie Kutcher
Patrick J. Larkin 2000

Lynne Ledford and Charles W. Ledford
Cynthia Schweers Lee 1994 and Brian M. Lee
Janet Leeds and Robert Leeds
Nancy Leet and George Leet
Patricia Legasey and Edward E. Legasey
Diane Leib and Greg Leib
Michael Elson Leitman 2004
Nancy McCoy Lemons and John W. Lemons 1993
Laurie Miller Lempeis 1988 and
Basil L. Lempeis 1979
Mary Eileen Leonard 1945
Rose Levin and Theodore Levin
Abner H. Levkoff 1944
Alice Levkoff
Barbara Levy and Eugene Levy
Penelope A. Levy and Paul Levy
Sandy Levy and Les Levy
Arthur L. Liberman 1991
Limehouse Produce Company
Donna Gerth Linzel 1986 and Gray J. Linzel, Jr.
Catherine Cooper Lipp 1997 and
James Lewis Lipp 1999
Helen S. Lipsky and Irving Lipsky
Joseph Lipton
Sandra G. Lipton and Morey Lipton
Frances Cain Lofton 1979 and Lionel Lofton
Terry Lohnes and Donald Lohnes
Kathryn B. Loney
Susan R. Lourie
Kathleen Holtz Low 2000 and
David M. Low 1998
Tami Scott Lowman 1982 and Rick C. Lowman
Lowndes Properties
Jane E. Lurie and Robert D. Lurie
Anne Lyndrup and Allen W. Lyndrup
Linda B. Lynn and Stuart Lynn
Jeannette Foster Lyons 1954 and Jack A. Lyons
Diane MacIver and Mathew MacIver
Brooke Manheimer and
Jeffrey P. Manheimer 2001
Trenita V. Manigault
Linda D. Manning and Raymond A. Manning
Manor Enterprise
Laura L. Marchant and
William Wood Marchant III 1989
Betsy Marchant and
W. Bristow Marchant, Sr. 1977
Swain Banks Marion 1986 and
Robert F. Marion 1987
Teresa L. Boley and Joseph D. Markee
Sabrina Vogel Marler 1986 and Mark E. Marler
Laurel Graham Marling 1999

Nina M. Marsh-Thomas 1997 and Rory J. Thomas
Bradford Marshall and Charles K. Marshall 1976
Katherine Brockington Marshall 2003
and James M. Marshall 2002
Wanda C. Martin and Thomas R. Martin
Connie R. Martin and Julian S. Martin, Jr.
David P. Masich
Abigail Sullivan Massalon 1985 and
John A. Massalon 1984
Carolyn Matalene and H. William Matalene III
Sylvia A. Matthews 1983
Michele York Mattox and
John Christopher Mattox 2002
Judith K. Matuny and Morton G. Matuny
Joseph C. McAlhany, Jr.
Mary Sue Nunn McDaniel 1994
and George W. McDaniel
Hope C. McDermott and William S. McDermott
Ingrid B. McDonald and Thomas F. McDonald
Harriet P. McDougal
Kellee Schreiner McGahey 2010 and
Robert J. McGahey III 2000
Dawn McIntyre and Fred P. McIntyre
Susan McKenna and James McKenna
Martha McKinney and J. Roland McKinney 1949
Georgeanna Schurmeier McLeod 1986
and William K. McLeod 1986
Keely Campbell McMahan 1990 and
David Michael McMahan
Judith J. McMahon and
Lawrence A. McMahon 2006
Janyce E. McMenamin
Mary W. McNab and James R. McNab, Jr.
Anne W. McNeal
Pamela Smith McNish 1988 and Steven McNish
Shari R. Meany and Kevin C. Meany
Nancy N. Mendelson and
Bernard P. Mendelson 1953
Pamela Lyles Mensah 1991
and Kwasi O. Mensah
Michael Jay Messersmith 1993
Adrienne Grubman Meyer 1965
and Gerald Meyer
Jane P. Meyerson and G. L. Meyerson
Kathryn LaBoone Michel 1994
and David L. Michel
Michelin North America, Inc.
Eileen Middleton and William Middleton
Susan Burnett Mikell 1981 and
Steven G. Mikell 1978
Julie Sizemore Miler and
D. Sherwood Miler III 1974

Joanne Milkereit and John Milkereit
Joseph J. Miller Foundation
James B. Miller
Phyllis P. Miller
Diane Jones Miller 2004 and
William E. Miller 1989
Mary Ellen Millhouse
Janette W. Moody
Edna Quinby Morgan 1935 and Hollis Morgan
Lissy L. Morgan and David L. Morgan
Carol Morgan
Joyce D. Morris
Michael A. Morris 2002
Walton Morris 1951
Kenton Morrison and George E. Morrison
Laura E. Moses
Vasiliki Moskos
Ruth A. Moyer 1975
Beth Mullen and William W. Mullen 1973
Linda Pate Mullinax 1980 and Lee H. Mullinax
Pamela Riley Mullis 1991 and Ronald Anderson
Angela T. Murray and Samuel M. Murray 1975
Stephen J. Murza
La Guardia Smith Myers 1993
and Anthony T. Myers
Pamela Nagel
Ben Navarro
Lee Ann A. Naylor and Drew R. Naylor 1982
Lynn Nellius
Melissa Starr Nelson 1994 and
Harrison Shelby Nelson 1994
Darla Batson Nettles 1959
Janet Nicholas and Barry Nicholas
Helen Betts Barbier Maynard Nixon
1978 and Roy C. Nixon
Cindy Bowman Noel 1988 and Gary Noel
Hope Northrup 1979
Mary Norton and Joe Norton
Mary Notari and Robert E. Notari
Wilfred Novit
Claire Krawcheck Nussbaum 1975
and Maurice Nussbaum
Mrs. Mildred Bowen O'Brien
Mindy Odle and David Odle
Thomas E. O'Donnell
Charles I. Oh 1981
Judith Olmstead and William E. Olmstead
Jan Newman Ordway 1962 and Earl Ordway
Mary Osborne and Stephen C. Osborne 1973
Bobby F. Ott
Margaret O. Owen and David H. Owen III
Nancy Oyler and Richard D. Oyler

Marie Paccione and Michael K. Paccione 1988
Elizabeth Rasor Page 1984
Traute Page
Cheryl Wright Pahwa 1980 and Sudhir K. Pahwa
Marguerite B. Palmer
Margaret Blair Parlman 1981
Christopher E. Pastelak 1984
Sandra S. Patterson 1971
Jule S. Graham and Maynard Pearlstone
Elise E. Peoples 1983 and Paul W. Peoples, Jr.
Patricia Pekatos
Linda Hough Perangelo
Periodontal Associates
Diana Permar and Mark Permar
Patsy K. Pettus
Margaret S. Pfunder and Malcolm R. Pfunder
Beverly P. Phares and Edward W. Phares
LaVonne Phillips
Mary S. Phipps and Howard Phipps, Jr.
Elizabeth Steffens Pilcher 1977
Brenda Pinckney and Michael J. Pinckney 1989
Will Player
Sandra A. Poliakoff and Edward E. Poliakoff
Patricia K. Pollard and John A. Pollard, Jr.
Carol Tilson Poeser 1980 and Jim M. Poeser, Jr.
Amy Sloan Pope 1994 and Andrew W. Pope
Leslie Wayne and Don Porcaro
Mary Jo Potter and William Z. Potter
Whitney Powers
Bridget Bettelli Price 2003 and Kevin Price
Susan M. Psimer
Theresa A. Pstrak and David W. Pstrak 1985
Saundra W. Purvis and John S. Purvis
Cathy H. Quashie and Colin Quashie
Betty Quesenberg 1980 and
Billy G. Quesenberg, Jr.
Kathleen Kennerty Rackley 1969 and
Charles Gary Rackley 1965
Suzanne Cuomo Raiford 1981 and Steve Raiford
Raven Cliff Company
Laura Hamilton Rawl 1969 and
A. Victor Rawl 1968
Rawle Murdy Associates, Inc.
Jeanne G. Reagin and K. Britt Reagin 1998
Lisa Balentine Rebula 1983 and Oscar C. Rebula
Jennifer J. Redfern 1995
Susanna Durden Reed 1982 and
Scott J. Reed 1984
Ronald Lee Reese
C. Ford Reese
Regions Bank
Julie Reich and Richard R. Reich 1994

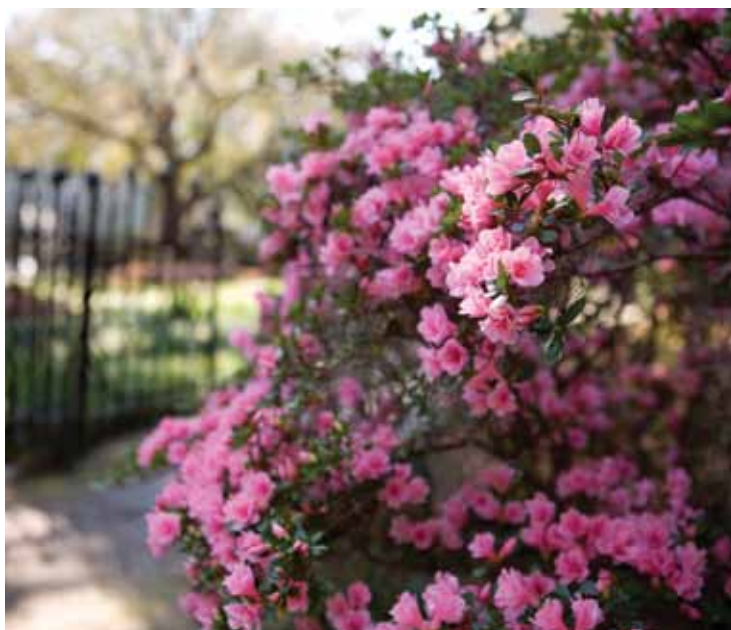
Elizabeth Allen Rekito 1998 and Anthony Rekito
Joyce Dahlgren Remsburg 1956
and Clark L. Remsburg
Joseph Steven Renau 1993
Elizabeth Joanne Render 1989
Rebecca E. Reynolds 1987
Catherine G. Rice and Garson L. Rice, Jr.
Amy K. Rich and William N. Rich
Sanita Richard and Fred L. Richard
Michele Siepert Richards 1996 and
Jonathan Morris Richards
Robben Richards
Kenneth L. Richardson
Julie Spell Roberts 1984 and
Tobin J. Roberts 1982
Louester Smalls Robinson 1977
and Peter J. Robinson
Jane Dunlap Rogers 1975 and Gill Rogers
Anna Roche Rogers 1991 and
Robert B. Rogers, Jr.
Nadia P. Blanchat and Kent L. Rollins 1976
Robert Rone
Roper Saint Francis Healthcare
Brenda Rosen and Samuel Isaac Rosen
Sara B. Rosen and Samuel H. Rosen
Maxine J. Rosenberg and Fred Rosenberg
Sandra Kahn Rosenblum 1980
Sheralyn Rosenblum and Arthur Rosenblum
Irene O. Rosenthal
LuAnn B. Rosenzweig and Steven Rosenzweig
Valerie Ross and Craig A. Ross 1999
Rudy T. Rothseiden 2003
Heike Rubinstein and Joseph H. Rubinstein
Joseph W. Rubin
Jean Rudich and Leon M. Rudich
Martha Thomas Rudisill 1960
and Hillyer Rudisill III
Robert B. Rummerfield
Anne H. Russell and Harold B. Russell, Jr.
Kristi M. Ryba 1988 and Isaac Ryba
Samuel Freeman Charitable Trust
Dorothy Sanders and Richard J. Sanders 1966
Betty Watkins Sandifer 1984 and
Paul A. Sandifer 1968
Robert J. Sauer 1977 and D. Oliver Bowman
Melissa Garrison Sauls 1986 and
Richard Keith Sauls 1990
Janet Wells Scarborough 1998 and
George C. Scarborough 1975
Janet Porter Scarpato 1968 and
Robert A. Scarpato
Jordy Christian Schaffner 2002

Betty Jo Schleier and Dudley Schleier
Ella L. Schlosburg
Sarah Davis Schneider 1987 and
William R. Schneider
Nella Barkley Schools 1986 and
David R. Schools 1984
Darleene Campbell Scott 1979 and Bill Scott
Ashley D. Scully 1995
Marianne Seabrook and Luther Seabrook
Seabrook Island Natural History Group
Faye Seigel and Robert A. Seigel
Select Health of South Carolina
Margaret Seres and John J. Seres
Joanna Greiner Setzler 1982
and Thomas E. Setzler
Cynthia Heatley Seyle 1966 and
Gerald L. Seyle 1965
Scott Sanders Shanklin-Peterson
Ann Stout Shealy 1978 and Dennis G. Shealy
Kathleen Sheftall and Benjamin F. Sheftall
Amy M. Gordon 2002 and
Joseph A. Shepanek 2007
Catherine F. Shroka
Dedrick L. Siddall 2002
Marcy K. Siegel and Marshall E. Siegel
Reid Sigmon
Rebecca Shackelford Sigmon 1970
and Lee M. Sigmon 1968
Heather Simmonds and John Simmonds
Harriet B. Smartt and Richard W. Smartt
Sandra M. Smiley and Gary R. Smiley
Amy C. Smith and James D. Smith, Jr. 1993
Sandra Smith and Shawn R. Smith 1996
Cherie Westendorff Smith 2003
and C. Ryan Smith 2002
Ashley Jones Smith 2000 and
Michael J. Smith 1999
Carleen L. Smith and Woodie R. Smith
Hermine Low Smith 1962
Catherine P. Smith and Hilton C. Smith, Jr.
Kay H. Smith
Margaret M. Snyder and J. Fred Snyder
Cynthia Solomon and Kerry Solomon
South Carolina Federal Credit Union
Alanna Arnetta Steaple 1989
Brenda Missel Stevens 1967 and
William E. Stevens 1967
Erin Elizabeth Stokes 2004
Mary C. Stokes and Douglas W. Stokes, Jr. 1984
Tommy Stone
Annie Stone and Graham Stone

Yvonne M. Stoneburner and
Frank D. Stoneburner
Robin L. Stout
Katina P. Strauch and Bruce Strauch
Louise Guenveur Street
Elizabeth Ann Strickland 2000
Ashley Gerhardt Stuckey 1999 and
Scott Ray Stuckey 1992
Lois M. Sugarman 1982
Diane Sula and Richard L. Sula
David Tyson Sullivan 1995
Jayne Sumner and Larry D. Sumner 1969
SunTrust Bank, Charleston
Debbie Surratt and Greg Surratt
Vaishali M. Swami 1985
Patricia R. Sykes and Paul J. Sykes
Karen Tarpey and John D. Tarpey 2000
Lillian D. Tasker and Gary D. Tasker
Kristin Walker Tawes 1993 and
George Warren Tawes, Jr.
Tina Louise Taylor 2000
Denise M. Taylor and William F. Taylor 1973
Francine F. Taylor
Chuck Taylor
Debra Taylor and Daron Taylor
Lois R. Taylor and John R. Taylor
Peter Tecklenburg
Caroline W. Thibault and Albert A. Thibault
Samuel Duane Thomas
Frank V. Thompson 1992
Maurice Horne Thompson 1958
Gretchen Geiger Thornsberry 1995
and Jeffrey M. Thornsberry
Jane Lucas Thornhill 1946 and Van Noy Thornhill
Kelly Workman Tick 2001 and Louis C. Tick 1998
Ijo Toporek and Stanley D. Toporek 1961
Toporek Family Foundation
Lillian D. Trettin and Carl C. Trettin
Trident United Way
Kimberly Onspaugh Truslow 1993
and Kevin Christopher Truslow
Janice Tyler and James Brian Tyler 1981
Ashley Heltemes Tylus 2005 and
David J. Tylus 2007
William H. Vandiver 1970
Judith S. Vane and Jack Vane
Juanita Sims Vaughan 1980 and
Murle L. Vaughan, Jr.
Meredith Verrecchia and Paul V. Verrecchia
Janna Peterson Vincent 1992 and
Daniel A. Vincent, Jr.
Sandra Vineyard and Philip P. Vineyard, Jr.

Sandy Bryan Vitalis 1991 and Gregory L. Vitalis
Janis Vogelpohl and Theodore W. Vogelpohl
Andrea L. Volpe
Joshua Hans von Szalatnay 1999
Lorraine W. Wachter and Joseph H. Wachter, Jr.
Charles Foster Wade 1979
Mary Walker and Steve Walker
Christina Stewart Wall 1988 and Timothy J. Wall
Patricia Kendziora Wanstreet 1983
Mary P. Watson and Philip B. Watson, Jr. 1985
Laura Ricciardelli-Watt and David R. Watt
Warren D. Watts
Heidi S. Whaley and John S. Whaley, Jr. 1972
Sophia Waring White 1961 and Marvin H. White
Ashley Copeland Wiggins and
Nolan Leitner Wiggins, Jr. 1997
Wild Dunes Resort
Julie Huggins Wilkerson 1981
and Peter L. Wilkerson
Marlene F. Williamson and Charles Williamson
Toula Philipps Williams 1972
and Charles Williams
Tara A. Wilson and William D. Wilson, Jr. 1988
Gail M. Pilgram and M. E. Wilson
Lisa A. Wilson and Patrick A. Wilson
Cindy McDougal Winston 1989
and David C. Winston
Lauren Wolcott and Edward W. Wolcott, Jr.
Wolf & Wolf, LLC
Matt D. Wolfe 1994
Betsy Wolper and Leon Wolper
Martha M. Woodruff and
Frank B. Woodruff 1970
Victoria Floyd Wooten 1970 and
Kenneth F. Wooten
Worthwhile
Willie Anne Wright
Connie Wyrick and Charles L. Wyrick, Jr.
The Henry and Sylvia Yaschik Foundation, Inc.
Helen Yochum
Marcia S. Yochum 1996 and
Henry M. Yochum III 1994
Martin I. Yonas
Marty Young and Gregory Young
Suzanne Weaver Zimmer 1989
and Jeffrey Zimmer
The Jerry and Anita Zucker Family
Foundation, Inc.
Megan Zwerner and Peter Zwerner

* Deceased



IN TRIBUTE

Thank you to our donors who made gifts to the College in 2011 in memory or in honor of the following special people who made a difference in their lives and in the life of the community.

Honored Individuals

Harriet Apostolou
 Neal Baker
 Thompson P. Barnwell
 Naomi R. Benjamin
 Allison M. Bishoff
 John Bowen
 Jesse A. Bowers
 Nancy E. Brown
 Carol A. Buchanan
 Caroline J. Callison
 Matthew S. Ciganovic
 Paul Coble
 David J. Cohen
 Colin K. Colbert
 Louis E. Condon
 Wendell F. Cox
 James D. Decker
 Johnny Diamond
 John G. Doyle
 Neil W. Draisin
 Yvonne D. Evans
 Rachel A. Feinberg
 Samantha R. Fisher
 Terry B. Fisher
 David Funk
 Anna C. Garrett
 George D. Gentry
 Sarah B. Gordon
 Joshua T. Graham
 Ryan M. Grand
 Laura S. Griffin
 Michael W. Haga
 Morgan L. Hall
 Frank L. Hefner
 David C. Heisser
 Andrew G. Hendricks
 Joseph E. Hiller
 William B. Holt
 Patrick H. Hurd
 Robert Ivey
 F. M. Johnson
 Emily E. Kocher
 Marie M. Land
 Brianna Leask
 Caroline M. Legare
 Harry M. Lightsey
 Nathaline Lobo
 Lynn L. Lyles
 Sarah L. Mancino
 Benedict T. Marino
 Laurel A. Mastin

Mark A. Mattison
 Corrie McCallum
 Douglas McCoy
 Jack A. McCray
 Gibbon S. Miler
 Doris B. Moffatt
 William V. Moore
 Mary L. Morrison
 Robert F. Morrison
 Edward L. Murray
 Jerry Muzin
 Allan L. Mysel
 Paul T. Nelson
 James Newsome
 Stephen O'Donnell
 Aaron S. Olitsky
 Thomas A. Palmer
 Susan H. Payment
 Amanda L. Petway
 Ruth M. Pickett
 Roderick S. Quiroz
 George Ramsay
 Daniel Ravenel
 William B. Regan
 Robert L. Rice
 Sabrina I. Riotto
 John M. Rivers
 Gerry L. Rose
 Jeremy I. Rosenthal
 Emily J. Salisbury
 Alice B. Segars
 Minnie Sherman
 Bessie M. Smith
 Catherine P. Smith
 George G. Spaulding
 Raymond A. Stern
 Cornelius W. Thomas
 Gladys Thomas
 Maurice H. Thompson
 H. E. Townsend
 Jeremy W. Vann
 Andrew R. Wagner
 John S. Walker
 Frances C. Welch
 John A. Zeigler

Tribute Donors

Janice M. Egypt
 Sarah Pleasants Ailsworth 2008
 Sarah D. Ailsworth and
 Timothy S. Ailsworth
 William P. Algary

Julie L. Allen and Michael G. Allen
 Alpha Rental Plus, LLC
 Anne Alster
 Constance Anastopoulo and
 Akim A. Anastopoulo
 Emmy Lou Anderson
 Anonymous (10)
 Appraisal Services, Inc.
 Arnold-Wilbert Corporation
 Teri A. Astren and Steven F. Astren
 Cheryl A. Babrowicz
 Marguerite M. Babrowicz
 and Robert Babrowicz
 Barbara Feldman Backer 1982
 and Donald Backer
 Laura E. Bailey
 Mary Gordon Baker
 Jane Ball and Nathaniel I. Ball III 1964
 Ballet Academy of Charleston
 Alida Barnwell and John P. Barnwell
 Virginia S. Barnwell 1947
 Theodore H. Barrett
 Cathy T. Barrows and
 Raymond D. Barrows
 Nancy C. Batchelder 1996
 and Lee C. Batchelder
 Batteries, Inc.
 Carolyn C. Behse and Dean P. Behse
 Catherine B. Bell and J. Philip Bell
 Belle Haven Country Club
 Roberta Benjamin and
 Seth B. Benjamin
 Patricia E. Bennett and
 William P. Bennett
 Carmen J. Bentz
 Amy M. Berdusco and
 Roger J. Berdusco
 Leslie A. Berry and
 Kenneth R. Berry, Jr.
 K. Tracey Bible 1994 and
 Kenneth W. Bible
 Richard F. Blackburn
 Kathryn D. Blair and Andrew C. Blair
 Rebecca A. Meden and
 Lincoln P. Bloomfield, Jr.
 Gloria L. Bond
 J. Sidney Boone, Jr.
 Ann B. Borelli and Raymond F. Borelli
 Jeannette Moore Bowers
 Rose Ann T. Boxx
 Alice H. Brewer

Elizabeth Seabrook Brown
and Charles Lee Brown
Brown Electric Company
Catherine T. Buchanan and
William J. Buchanan III
Charlene Bunch and E. Karl Bunch
John Callow
Calvert Service and Supply, LLC
Yvonne E. Carson and
Peter D. Carson
R. Gay Carter
Ruby J. Cassanese and
George C. Cassanese
Geraldine W. Cassidy
Daniel Plaxco Chandler 2001
Jill Tate Chapman 1997 and
Troy V. Chapman
Charleston Branch Harbor Pilots
Charleston Collegiate School
Eileen Chepenik and
Stanley Chepenik
City of North Charleston
City of North Charleston,
Cultural Arts Department
Katharine Wilkerson Claussen 1979
and Arthur Chris Claussen III 1978
The Cleaning Authority
Keith A. Clifford
Whitney Hinds Coble 2008
and Brett Coble
Diane Heisser Cochran 1958
Bonnie E. Coe
Julie E. Cohen 2003
Mary Ann K. Colbert and
Timothy J. Colbert
Kathryn S. Cole and Mike Cole
Marie Jeffords Condon 1970
Lisa Clare Conway
Kara D. Cosby and Scott F. Cosby
Wendell Haley Cox
Emily P. Coyle and Dennis P. Coyle
Duval G. Cravens
Margaret Johnson Davis
Leilani DeMuth
George E. Dickinson
Evangelina F. Dobbs and
Michael K. Dobbs
Amy Dobson
Helen Michel Dodds 1963
and Kenneth Dodds
Barbara Dolan
Joanne F. Domson

Sue S. Donaldson and
Roger H. Donaldson
Shanon Dooley 2011 and
Steven F. Dooley
Harper Drolet
Carol J. Drowota 1964
Susan K. Dunn
Katherine S. Edwards and
Lester Edwards
Margaret L. Ehrhardt 1967
Margaret S. Eigner 1974 and
Joseph J. Eigner, Jr.
Charles M. Enterline 2008
Environmental Solution, Inc.
Yvonne duFort Evans 1958
and L. Wilbur Evans 1951
Evan B. Ewan
John G. Faron
Sharon L. Feinberg and
Dennis A. Feinberg
Iris Feinberg and Bruce Feinberg
Christopher E. Ferraguto
Fidelity Charitable Gift Fund
Susan E. Finlaw
Terry Becker Fisher 1984
and Dennis J. Fisher
Joan S. Flippin and Fred L. Flippin
Pat C. Flowers
David P. Foltz
Kyle N. Foltz
Jeffrey A. Foster
Karen Fradua
Karen Fraser and
Christopher B. Fraser
R. Elizabeth Mitchell Fraser
Renee Shimel Frisch 1940
Addie Futrell and Benson S. Futrell
Katherine W. Gardner
Sara B. Gardocki
Melvin L. Garrett
Janet B. Gartlan and Peter G. Gartlan
Heidi L. Garvin
Frances Voigt Geer 1967 and
Charles C. Geer, Jr. 1965
Hollis Rae Gerth 2011
Dana S. Gibbons and
James C. Gibbons
Carol Gibbs and R. E. Gibbs
Suzanne Giffen and Terry Giffen
Gilbert Holdings LLC
Mary Manigault Gilbreth

Sally Schwacke Goins 1984
and Ray Goins
Sarah D. Gordon and
Samuel F. Gordon III
Carolyn H. Gorman and Joe Gorman
Marian C. Greely
Leah D. Greenberg and
Raymond S. Greenberg
Harlan M. Greene 1974
and Jonathan Ray
M. Ross Griffith
Evelyn L. Griswold and
John Griswold
Nancy J. Groth and Dean A. Groth
William D. Gudger
Michael W. Haga
Nancy C. Hall and Charles D. Hall
Patricia Hanawalt and
John B. Hanawalt
Virginia C. Hardie and
Richard T. Hardie
Hollie C. Harms
Judy C. Harrison and
David F. Harrison
Donna B. Hartin
Sylvia Craver Harvey 1958 and
Charles Edward Harvey
Lisa Haskell and Morgan Haskell
Mariana Ramsay Hay 1982
and David M. Hay 1981
Ann M. Hellman and Max B. Hellman
H. E. Hemingway
Susan O. Herlong and
Stephen P. Herlong
Estelle F. Higgins and Bill Higgins, Jr.
Leigh Higgins and Paul C. Higgins
Judith A. Hines and Paul G. Hines
Kathy B. Hirsch and
J. Lawrence Hirsch
Julia R. Barr and Richard Hirschlag
Andrea B. Hodge and
James G. Hodge, Jr. 1989
Elizabeth A. Hofmann and
Ralph W. Hofmann
Carole N. Holden and
Charles Holden III
William Barnwell Holt 1974
Home Veterinary Services
Carla A. Hopke and Frances J. Hopke
Ann R. Hopke and Michael W. Hopke
Suzanne S. Horkey and
Charles J. Horkey

William B. Howard
Jill S. Hunter
Arthur E. Jackson III
Barbara W. Jackson
Stefanie A. Johnson
Robert Johnston
Johnston Air Conditioning
& Heating Company
Johnstown Hearse Rental
/ Funeral Supplies
Johnstown Material Handling, Inc.
Karen Burroughs Jones 1974
Melbie R. Jones
Judith Kaiser and Charles F. Kaiser
Ann D. Kaiser and Joseph G. Kaiser
Catherine K. Keany and
Kevin J. Keany
Melanie H. King
Joyce P. Knox and William P. Knox
Catherine A. Kocher and
Mark J. Kocher
Sue A. Sommer-Kresse
and John L. Kresse
Christina Callison Kubinska 2007
Thomas J. Kunkle
Mary B. Landini and Piero Landini
Kenneth D. Lasseter
Rosanne Leberfinger and
John A. Leberfinger, Jr.
Frances Ledermann
P. Lynn Kearney and James Lee
Carrie S. Leveridge and
Richard J. Leveridge
Elizabeth R. Lewine
Maura Lindsay and
Christopher F. Lindsay
Eva D. Lipman and
Charles M. Lipman
Janet Givner Livingstain
David Henry Lobo 1989
Low Road Foundation
Kathleen Luke and John A. Luke, Jr.
Dorothy L. Lyles and
Clarence C. Lyles
Mary L. MacLeod and W. F. MacLeod
Bea Smith and Joseph W. Malecki, Jr.
Ann L. Mandel
Theodore Tobias Mappus, Jr. 1946
Diane Marine and Mark L. Marine
Robert Jackson Martin IV 2007
Carol P. Maschi and John T. Maschi
Susan D. Master and Michael Master

Renee J. Mathur
P. R. Matthews and M. M. Matthews
Katherine B. Mattison
Wendi McAfee
McBrearty & Associates, LLC
Amy Thompson McCandless
Meredith McEntire and
Mark S. McEntire
Ann M. McKay and William L. McKay
Penelope Jones McKeever 1969
and Francis Dennis McKeever
Nancy N. Mendelson and
Bernard P. Mendelson 1953
Mercer Retail Services, Inc.
Tony Meyer 1949
Joan C. Middleton
Gibbon Sizemore Miler 2010
Karen A. Moll and Peter E. Moll
Anne P. Monsees
Moore Beaufort & Woodham, LLP
Gillian Morantz
Bryden T. Morris
Jennie H. Morris and John A. Morris
Valerie B. Morris and
Boris Bohun-Chudyniv
Karen T. Morris and W. Kelly Morris
Phyllis J. Morrison
Susan J. Morrison
Lawrence Hale Moser 1982
Carol Legare Mazingo 1974
and George Mazingo
Thomas D. Mulhern
Doris Maher Murphy 1949
Ms. Ellen L. Murray
Susan Myers and Joseph L. Myers
Susan R. Myers and Michael K. Myers
Marlene U. Navor
Elaine Neff and David Neff
Traci Lyn Newcomb
Kathryn A. Norton
Kimberly M. Novinger 2009
Melody Nuss and Jerry J. Nuss 1990
Mildred Bowen O'Brien
Patricia Ann O'Donnell
Kevin Joseph O'Leary 1979
Eleanor F. O'Neill and
James R. O'Neill
Rebecca Oberman and
Paul Oberman
Oberman & Oberman
Marcella M. Odell and
William R. Odell



MANY DONORS MADE GIFTS IN 2011 IN MEMORY OF BELOVED COLLEGE OF CHARLESTON DANCE PROFESSOR ROBERT IVEY. WINNER OF THE ELIZABETH O'NEILL VERNER AWARD FROM THE S.C. ARTS COMMISSION FOR EXCELLENCE IN THE ARTS, IVEY WAS A DISTINGUISHED ARTISTIC DIRECTOR AND CHOREOGRAPHER. "BOB WILL FOREVER LEAVE HIS IMPRINT ON THE SCHOOL OF THE ARTS AND THE ARTS COMMUNITY IN CHARLESTON," SAYS VALERIE MORRIS, DEAN OF THE SCHOOL OF THE ARTS.

Elizabeth Ogletree and
Martin Ogletree
Marjorie P. Olds and W. Mason Olds
Francis G. Ozog Funeral Home, Inc.
Tina Psillos Padgett 1978 and
Gregory D. Padgett 1979
Marguerite B. Palmer
Kimberly Palmer and W. Scott Palmer
Jennifer B. Parvin and George Parvin
LaVonne Phillips
Julie Thome Pickett and
Otis Westbrook Pickett 2008
Gail Pike
Linda M. Plunkett and
Ronald C. Plunkett 1997
Kristin Prebay and John Prebay
Andrew Warfield Price 2009
Tracy Y. Price and James W. Price
Anne Stender Puckhaber 1947 and
Bernard F. Puckhaber 1950
Jimma Raco and Fred E. Raco, Jr.
Janet E. Raisch and William A. Raisch
Gene S. Rawlings and
David G. Rawlings
Crystal Redding and
Gorman J. Redding, Jr.
Vicky P. Reeves and
Stephen G. Reeves
Ann C. Revere and Stewart A. Revere
Frances C. Rhett 1946
Catherine G. Rice and
Garson L. Rice, Jr.
Toni-Dara Infante and
Randolph Riotto
Susan S. Rison and David Rison
Joseph W. Rively 1989
John Minott Rivers, Jr.
Bonnie G. Rivkin
Lorna J. Roberts and
Samuel B. Roberts
Norma Roberts and Tom Roberts
Lois M. Robinson
Louester Smalls Robinson 1977
and Peter J. Robinson
Kelly Rones
Ingrid R. Rose and Milton M. Rose
The Rosenblatt Foundation
Dale Rosengarten and
Theodore Rosengarten
Gail A. Rudloff and John H. Rudloff
Patti S. Salisbury and
Howard G. Salisbury, Jr.

Phyllis B. Saltzman 1979
and Paul Saltzman
Louise C. Sawyer and Neil P. Sawyer
David J. Schoner
Theresa H. Schuyler and
Dean Schuyler
Schwab Charitable Fund
Sandra K. Schwartz
Stephen Edward Scibal 2009
Barbara B. Selvy
A. Victoria Sessions 1998
Leslie R. Shaffer
Robert L. Shaffer
Victoria Smith Shaw 1990
and Henry Shaw III
Jane A. Sherin and Brian Sherin
Ivan Morton Sherman 1974
and Mark Ledet
Stephanie M. Siegel and
Ned L. Siegel
Laura M. Simmons and
Christopher D. Simmons
Joyce B. Simpson
Nancy B. Sliwa
Nancy H. Smith and Charles R. Smith
Kit Smith and Joel A. Smith III
Pamela J. Roberts and
Joel H. Smith 1978
Robert J. Smith
Society of American
Military Engineers
South Carolina Aquarium
South Carolina Stingrays
Lila S. Spell and Tony B. Spell
St. James Church Goose Creek
Nancy Eaton Stedman
Ann Stein and Johnathan Stein
Mary L. Stewart
Cathy R. Stinnette and
Raymond C. Stinnette, Jr.
Ashley C. Stock
Meredith Stone
Stono Cafe & Catering, LLC
Hannah Stricklin and
Brian C. Stricklin 1993
Jennifer L. Stufflebeam
Marsha R. Sullivan and
Timothy Sullivan
Patricia R. Sykes and Paul J. Sykes
Jon M. Taie
Sylvia D. Tarleton and
Cullie M. Tarleton

Eleanor Taylor and J. Van Wyck Taylor
Gary Walsh Thomas 1983
J. Timothy Thompson
Jennifer H. Thompson
Jane Lucas Thornhill 1946
and Van Noy Thornhill
Cynthia D. Tiedemann and
Julian A. Tiedemann
Mark C. Tiedje
Joshua Randall Tucker 2013
Ritha H. Tuten
UPT Strategies, LLC
Nadine C. Vestring
Jerri S. Vlasho and Vincent T. Vlasho
Andrea L. Volpe
Sally Rutherford and Glenn Wagner
Joye K. Wall and James W. Wall
Susan A. Wallen and Nils G. Wallen

Karen H. Walsh and
Christopher Walsh
Mary Anne Warner
Robbin Jan Watson 2010
Felicia B. Watson and William Watson
Peggy Watt and George P. Watt, Jr.
Mary Ellen L. Way and
Charles S. Way, Jr.
Roger G. Weaver
Ruth R. Weddington and
James E. Weddington
Frances C. Welch
Elizabeth Simpson and
Edward S. Wheeler
Debra B. White and F. Gray White
White Stone Baptist Church
Grace A. Wilder and
Allison F. P. Wilder, Jr. 1960

Jenny Hane 1974 and Julian
D. Wiles, Jr. 1974
Marilyn York Willis
Amy Wilson
Lee Robinson and Jerald Winakur
Carrington S. Wingard
and Barry Wingard
Susan S. Winn and Allan R. Winn
Janet Lee Witkosky
Judy Wolman and Kevin Wolman
Ann Woods
Charlotte M. Woolf
Elizabeth M. Guerard Wright
and Richard T. Wright
John A. Zeigler, Jr.
Linda K. Zoller and Michael Zoller
The Estate of Lavern M. Zook
Anita Goldberg Zucker
Barbara L. Zucker and Lenny Zucker



CISTERN
SOCIETY



CISTERN SOCIETY

The Cistern has served as the heart of campus for generations. The Cistern Society honors those alumni and friends who preserve the College of Charleston for generations to come through a commitment in their will, charitable trust or other estate planning method. Cistern Society donors are invited to an annual luncheon. New Cistern Society donors are presented with the official Cistern Society plate engraved in 24kt gold.

Marlene Alfred Addlestone 1964
 Lucy E. Albenesius and Edward L. Albenesius 1947
 Anonymous (4)
 Betty Beatty and Guy E. Beatty
 Lisa R. Bell 2003 and Robert E. Bell
 Charlotte L. Berry and Joe E. Berry Jr.
 Esther Boykin
 Judith C. Brooks and W. Ely Brooks 1941
 Charlene Bunch and E. Karl Bunch
 Sally C. Christian and James D. Christian 1997
 Janice Clark and Malcolm C. Clark
 Claudia Cohen and David J. Cohen
 Ann B. Connellee and William L. Connellee
 Catherine Dalla Mura and Richard A. Dalla Mura
 Sara Calhoun Davis and Chuck Davis, Jr.
 Mignon DeBerry and Arthur S. DeBerry
 Emily S. DeCosta*
 Ann Edwards and James B. Edwards 1950
 Debbie Engelman and Otis E. Engelman Jr. 1969
 Stanley B. Farbstein
 Amy N. Farley 2007
 Patricia H. Farrow * 1948
 Kathryn Smith Finger
 Jeffrey A. Foster
 Elaine T. Freeman
 Sarah Lynn Gainey 1966
 Mary Welsh Geils 1964 and George F. Geils Sr. 1963
 Richard Olin Gibson 1957
 Alan B. Goer
 Henrietta U. Golding 1974
 Nancy Gorski and Paul T. Gorski
 Samuel Greene
 Shannon Withrock Haddad 1978 and
 Richard A. Haddad 1975
 Ramona W. Hale
 Tom E. Heeny
 Hastings Wyman Henderson 1979
 Joyce Duncan Hilton 1954 and
 William D. Hilton, Sr. 1951
 Ann Herchak Horner 1977 and Jim Horner
 Ruth Hornik
 Jane Blakely Jennings
 Lotta K. Jett 1958 and Harriman H. Jett 1963
 Mary Quinto Johnson 1994 and Ashley Johnson
 Benjamin Joye 1975
 Barbara Keil 2001 and Julian E. Keil
 Lenora Kessler and Raymond A. Kessler Jr.
 Sharon Brock Kingman 1980 and Russell Kingman
 Joanne Lannie and Vincent P. Lannie
 Alice W. Latimer
 Mary Eileen Leonard 1945
 Nina P. Liu

Lyndelle A. Lovejoy and Howard R. Lovejoy
 Wendy Marcus
 Susan Clark Marlowe 1976 and Robert
 William Marlowe 1971
 Mindi Martin and John F. Martin 1982
 James R. McGeehan *1981
 Anne Edmunds McMaster
 Marianne Mead and David Mead Jr.
 Tony Meyer 1949
 Sam R. Miglarese
 Carol A. Mysel and Allan L. Mysel
 Caroline E. Newman 1941
 Melody Nuss and Jerry J. Nuss 1990
 Milward Deas Pinckney 1951 and Lucian Pinckney
 Cornelia D. Poulnot 1958
 Anne Stender Puckhaber 1947 and
 Bernard F. Puckhaber 1950
 Louise S. Ratliff 1977 and William E. Ratliff
 Gene Reed Jr.
 Emily H. Remington
 John Minott Rivers Jr.
 Renee Buyck Romberger 1981 and Randy Romberger
 Rose Condon Hamm Rowland
 1972 and John Rowland
 Dorothy Sanders and Richard J. Sanders 1966
 Fabian X. Schupper
 Ivan M. Sherman 1974 and Mark Ledet
 Kathryn N. Small
 Catherine Small and Robert S. Small Jr.
 Sue A. Sommer-Kresse and John L. Kresse
 Kate Stanton and David Stanton
 Theodore S. Stern
 Brenda Missel Stevens 1967 and
 William E. Stevens 1967
 Louise Guenveur Streat
 Kim Sturgeon and Thomas Vance Sturgeon 1981
 William E. Tate 1966
 Marie W. Thompson 1989 and
 C. O. Thompson III 1964
 Anita Condon van de Erve 1970
 Lucia J. Vest 1947 and Edward N. Vest
 Andrea L. Volpe
 J. Stewart Walker
 Sue Simons Wallace
 Margaret J. Winter 1943
 Libby Winthrop and John Winthrop
 Lois Ann Wyly 1947
 John A. Zeigler, Jr.
 Anita Goldberg Zucker

* Deceased



2011 COLLEGE OF CHARLESTON BOARDS

The dedicated volunteers who serve on the boards and councils provide support in many ways, including the promotion of academic programs, research, faculty development and institutional governance. Their leadership and advocacy play a vital role in the advancement of the College of Charleston. We thank these individuals for their time and commitment.

Please note: The names that appear in these lists were board members through December 31, 2011.

BOARD OF TRUSTEES

| | | | |
|-------------------------------|-------------------------------|------------------------------|----------------------------|
| Gregory D. Padgett, Chair '79 | Demetria Noisette Clemons '75 | Marie M. Land | Jeffrey M. Schilz '00 |
| G. Lee Mikell, Vice Chair '84 | L. Cherry Daniel '75 | Lawrence R. Miller | Joseph F. Thompson Jr. '74 |
| J. Philip Bell, Secretary | Frank M. Gadsden '80 | Annaliza Oehmig Moorhead '92 | John B. Wood Jr. '83 |
| Donald H. Belk '00 | James F. Hightower '82 | Toya D. Pound '91 | |
| John H. Busch '85 | William D. Johnson | Daniel Ravenel '72 | |

COLLEGE OF CHARLESTON FOUNDATION BOARD

| | | | |
|---------------------------|--------------------------|---------------------------|-----------------------|
| Renee Anderson | Margaret C. Frierson '85 | Jeffery E. Kinard '77 | George G. Spaulding |
| Peggy Boykin '81 | Kenneth S. Gustafson '75 | Sharon B. Kingman '80 | Steve D. Swanson '89 |
| W. Glen Brown Jr. '76 | H. Thomas Hallberg | Edward E. Legasey | John H. Tiller '84 |
| Beth M. Burke '94 | Dorothy G. Harrison | Ernest L. Masters Jr. | Sharon Toporek |
| Jackson L. Davis IV '90 | David M. Hay '81 | John E. Powell | Charles S. Way Jr. |
| Neil W. Draisin '65 | Arthur. J. Heath | Renee Buyck Romberger '81 | Jeffrey M. Weingarten |
| Richard D. Elliott | Amy L. Heyel '92 | Hellene S. Runtagh | Tomi Youngblood |
| Dennis J. Encarnation '74 | Tapley O. Johnson Jr. | R. Keith Sauls '90 | |
| Robert L. Freeman '78 | Stephen R. Kerrigan | Hilton C. Smith Jr. | |

ALUMNI ASSOCIATION BOARD

| | | | |
|-------------------------------|---------------------------------|--------------------------------|---------------------------|
| Mark O. Andrews '76 | Georgia Homer Darby '85 | Henry C. Leventis '97 | C. Gary Rackley '65 |
| Charles J. Baker III '80 | Albert E. Eads III '82 | Robert F. Marion '87 | C. Andrew Rankin '93 |
| Michael M. Beal '81 | C. Devin Eakes Jr. '05 | Robert W. Marlowe '71 | Daniel Ravenel '72 |
| Carl W. Blackstone '93 | Yvonne duFort Evans '58 | Michael W. Massey Jr. '87 | Michael R. Renault '95 |
| Brett A. Bluestein '97 | Margaret Collins Frierson '85 | Margaret Boykin Mays '88 | Jacqueline Flemons |
| Frances Weston Bramlett '77 | Darryl J. Fyall '01 | Beth Pierce Meredith '97 | Richardson '06 |
| Elizabeth Middleton Burke '94 | Jessica Gonzales Gibadlo '97 | Susan Burnett Mikell '81 | Carolyn Rogers '12 |
| Tania V. Charles '07 | Nicholas C. Glover '05 | D. Sherwood Miler III '74 | Renee Buyck Romberger '81 |
| Whitney Hinds Coble '08 | David M. Hay '81 | Jessica A. Mitsch '11 | Jane Riley-Gambrell '72 |
| Hartley Watson Cooper '94 | Theodore V. Howie Jr. '83 | Joseph L. Nicholson '87 | Angel Brown Touwsma '93 |
| Michelle A. Cooper '95 | Karen Burroughs Jones '74 | Jermel L. President '03 | Ann Ward Treat '04 |
| Bobby R. Creech Jr. '86 | Christina Callison Kubinska '07 | Jennifer Asnip Quattlebaum '96 | Cheryll Woods-Flowers '81 |

COUGAR CLUB BOARD

| | | | |
|-------------------------|------------------------|----------------------|---------------------------|
| James Anderson '55 | Chris Fraser | Frances Lofton '79 | Jim Redfern |
| Josh Atkinson '06 | Jeremy Glendenning '96 | Ralph Martino | Kevin Smith '92 |
| Remley Campbell '71 | Nancy Hahn | Valerie Morris | Cheryll Woods-Flowers '81 |
| Bobby R. Creech Jr. '86 | Tom Hallberg | Marc New '84 | Tomi Youngblood |
| David Crowley '98 | Tap Johnson | Biemann Othersen '50 | |
| Daniel Dickerson '99 | Danny Kendall '98 | Megan Owen | |
| Catherine Dority '99 | JJ Lamberson '93 | Winn Query '77 | |



CONTACT US

The College's Division of Institutional Advancement has worked diligently to make this list complete and accurate. If we have overlooked anyone or if there is an error, please allow us to correct our records. Call or email Carin Jorgensen at 843.953.5859 or jorgensencl@cofc.edu.

DIVISION OF INSTITUTIONAL ADVANCEMENT

George P. Watt Jr.

Executive Vice President
843.953.4367
wattgp@cofc.edu

FINANCE

K. Tracey Bible '94

Director of Financial Services
843.953.7458
biblek@cofc.edu

DEVELOPMENT

Chris Tobin

Vice President of Development
843.953.3694
tobinc@cofc.edu

Cathy Mahon '80

Associate Vice President
843.953.5432
mahonc@cofc.edu

David Masich

Director of Gift Planning
843.953.1835
masichd@cofc.edu

Laurie Soenen

Director of Annual Giving
Programs
843.953.3418
soenenl@cofc.edu

Carin Jorgensen

Director of Stewardship and
Donor Relations
843.953.5859
jorgensencl@cofc.edu

Denise Ciccarelli

Director of Corporate and
Foundation Relations
843.953.5018
ciccarellimd@cofc.edu

ATHLETICS

Steve Stroud

Associate Director of Athletics
for External Affairs
843.953.5498
stroudsa@cofc.edu

ALUMNI RELATIONS

Jack Huguley '72

Director of Alumni Relations
843.953.2060
huguleyj@cofc.edu

Karen Jones '74


Executive Secretary
College of Charleston Alumni
Association
843.953.5773
jonesk@cofc.edu

COMMUNICATIONS

Jennifer Lorenz

Director of Advancement
Communications
843.953.5126
lorenzjl@cofc.edu



 Printed on acid free paper with
30% post-consumer recycled fiber.

visit us online

giving.cofc.edu